



8<sup>th</sup>  
German-Brazilian  
Dialogue on  
Science, Research  
and Innovation

**RADICALIZATION AND VIOLENCE:  
PERSPECTIVES AND PREVENTION APPROACHES**

Session 2.3: Science and Research

# **Evidence based prevention of violent extremism**

**Andreas Armborst**

**National Center for Crime Prevention (NZK/NCCP)**

Funded by



Federal Ministry  
of the Interior, Building  
and Community

**NZK** **FORSCHEN  
WISSEN  
HANDELN**  
Nationales Zentrum Kriminalprävention

# Outline

- 1. What is evidence based PVE/CVE?**
- 2. Evidence base I: causes and correlates of violent extremism**
- 3. Evidence base II: impact of PVE/CVE**
- 4. Conclusion/outlook**

---

# 1. What is evidence based PVE/CVE?

---

“A preventive approach is evidence-based to the extent to which scientific research is able to establish a (theoretical and empirical) link between the approach and its intended outcomes.”

(NZK working definition)

- Paradigm originating from health care and medicine (1972 Archie Cochrane)
- Adaptation to social programs by Donald T. Campbell (1970's)
- Clinical trials and social experiments (RCTs)

# 1. What is evidence based PVE/CVE?

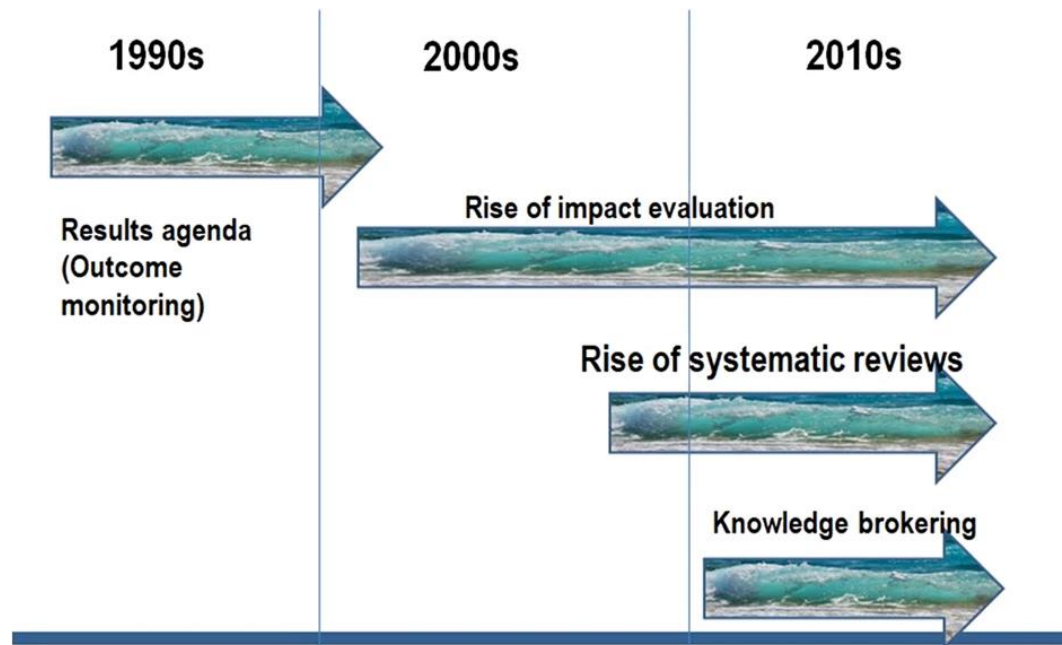
## Organizations and institutions



Identifying **impacts**.



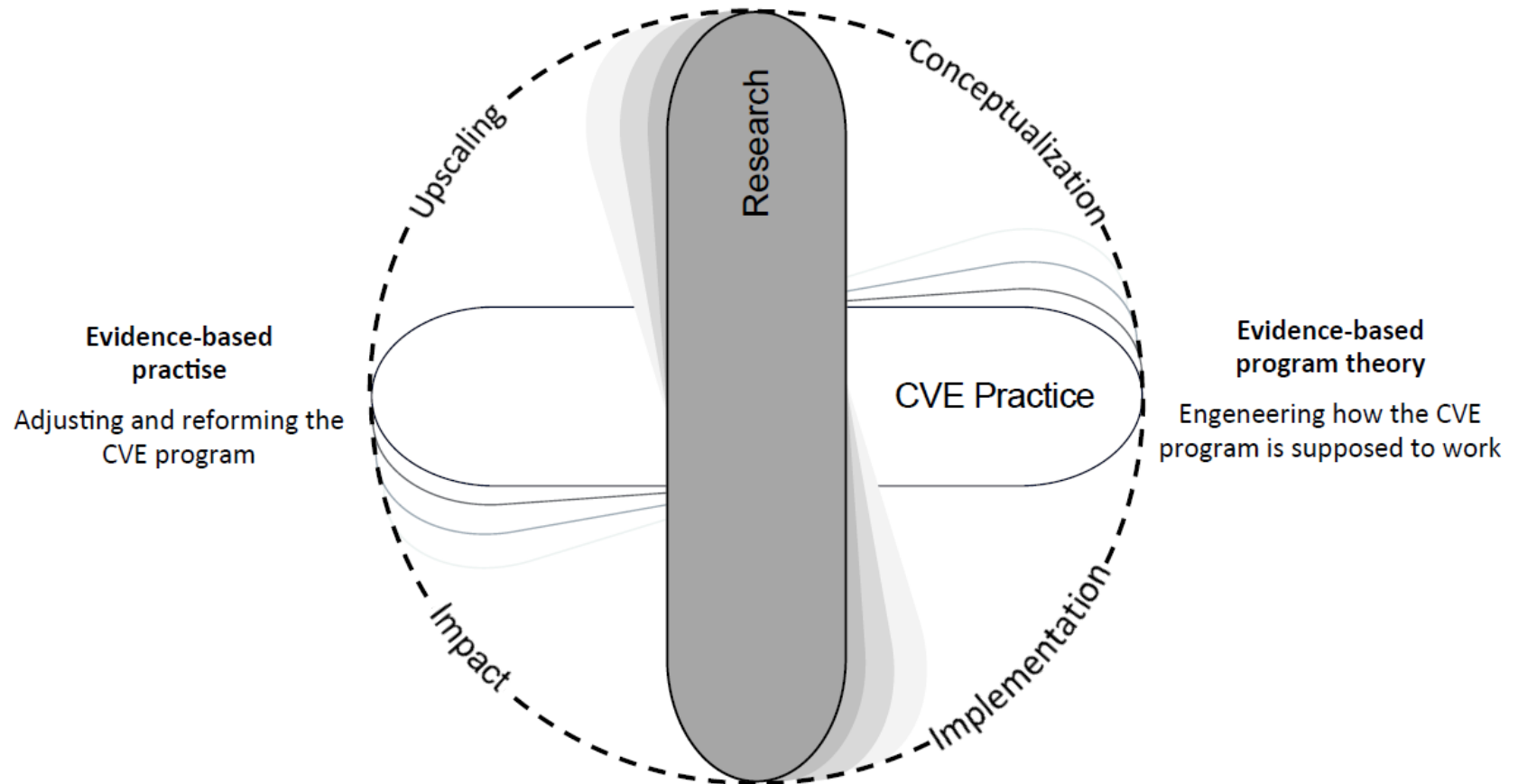
# 1. What is evidence based PVE/CVE?



White, H (2019): The twenty-first century experimenting society: the four waves of the evidence revolution.

## Evidence Base I: Scientific Research

Generating and pooling data on causes, correlates and protective factors for violent extremism  
(individual, group, and structural factors)



## Evidence Base II: Evaluation

Generating and pooling data on the actual impact of CVE practises

Creative Commons (CC BY-NC-ND)

NZK

# Outline

1. What is evidence based PVE/CVE?
2. **Evidence base I: causes and correlates of violent extremism**
3. **Evidence base II: impact of PVE/CVE**
4. **Conclusion/outlook**

## What is extremism?

Extremism is the idea of "us versus them," coupled with the belief that the success of "us" depends on the demise of "them."

---

Are you worried that someone you know is involved in extremism?  
Call our helpline at 844-49-PEACE for support.



**PARENTS FOR PEACE**  
COMMUNITIES AGAINST EXTREMISM

*Parents For Peace is a network of families and individuals hurt by extremism whose mission is to educate the public on the dangers of radicalization and extremism, and provide intervention support to de-radicalize people before it's too late.*

WWW.PARENTS4PEACE.ORG | HELPLINE AT 844-49-PEACE | TWITTER @PARENTSFORPEACE

AD PAID FOR BY TWITTER

276-029



---

## 2. Causes and correlates of violent extremism

---

Working definitions of radicalization:

- Radicalization is the cognitive process of developing radical political ideas that eventually result in active support for militant groups or direct engagement in violent action.
- Radicalization is the process of becoming a violent extremist or a terrorist.
- “What goes on before the bomb goes off” (Neumann 2008)

---

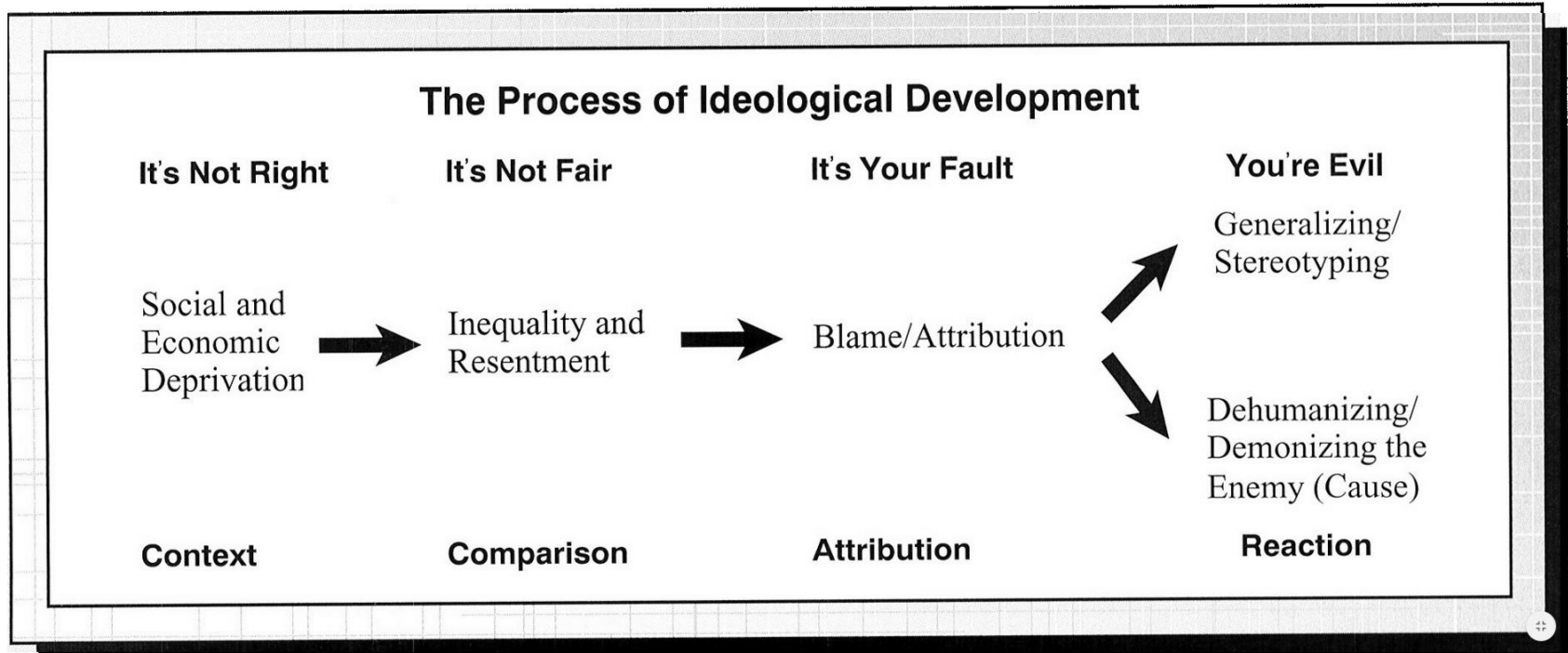
## 2. Causes and correlates of violent extremism

---

- (1) The 4-stage model of the terrorist mindset (Borum 2003)
- (2) The staircase model to terrorism (Moghadam 2005)
- (3) The two-pyramid model of radicalization (McCauley & Moskalenko 2008)
- (4) The “quest for significance model of radicalization” (Kruglanski et al.)

## 2. Causes and correlates of violent extremism

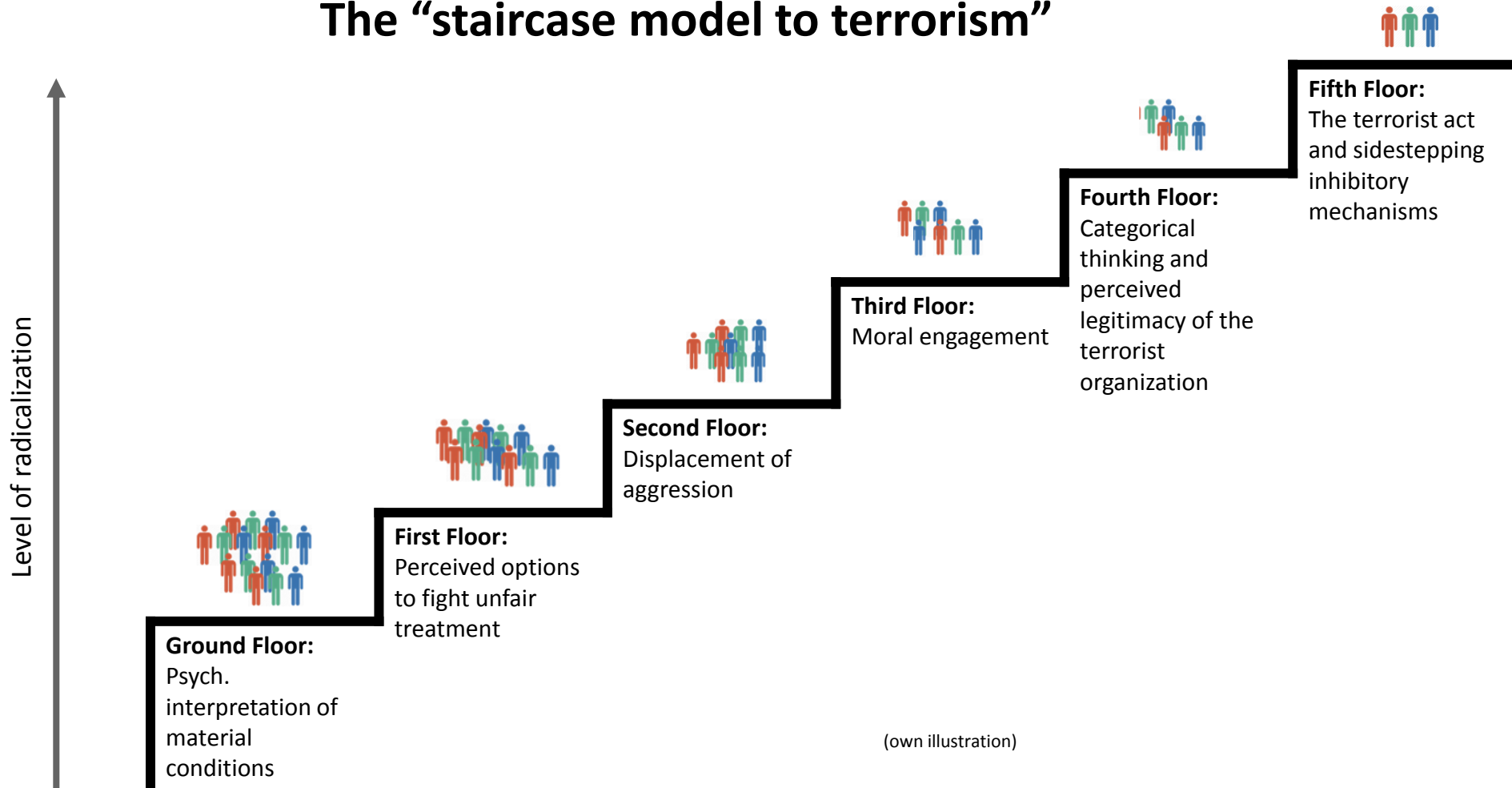
### The “4-stages model of the terrorist mindset”



Source: Borum, Randy (2003). Understanding the Terrorist-Mind-Set. *FBI Law Enforcement Bulletin* 72(7), 7-10.

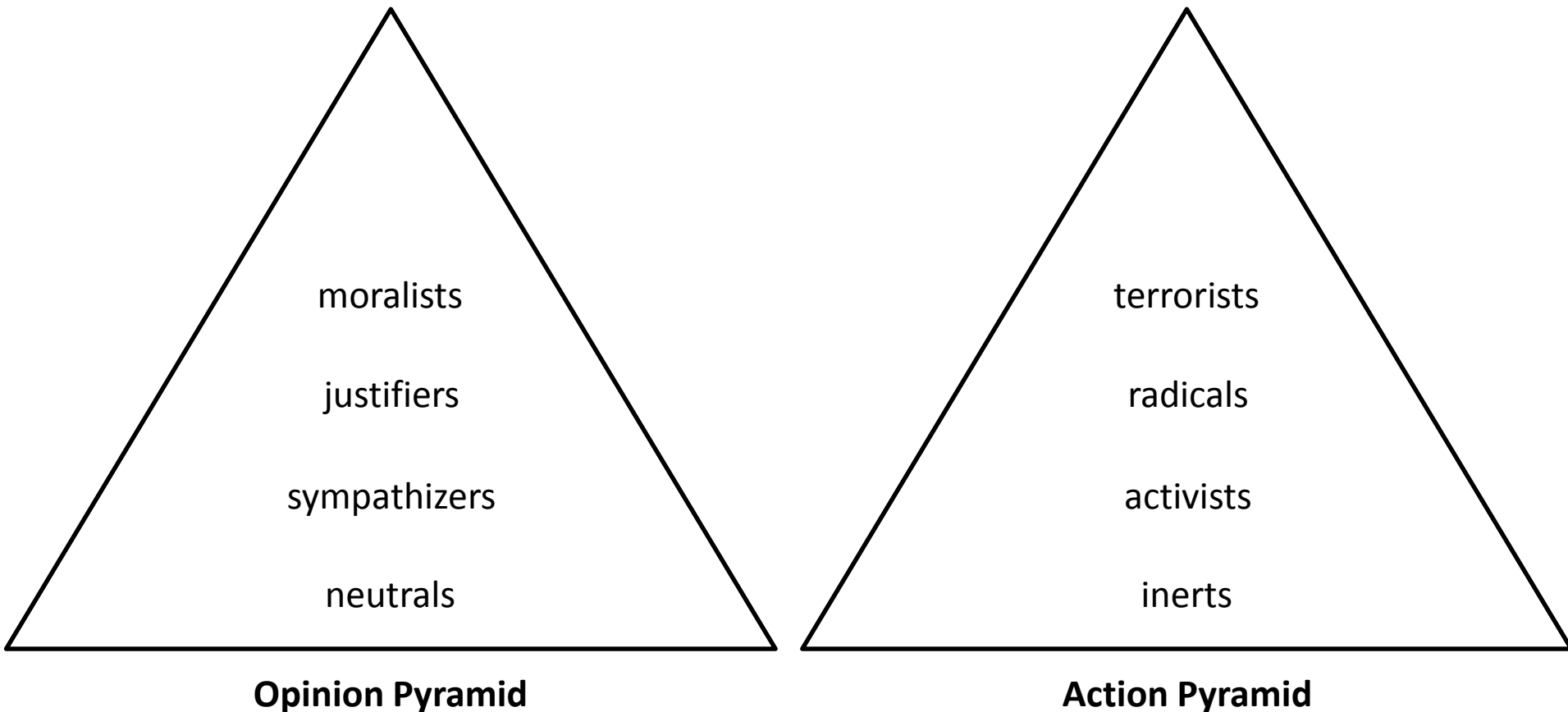
## 2. Causes and correlates of violent extremism

### The “staircase model to terrorism”



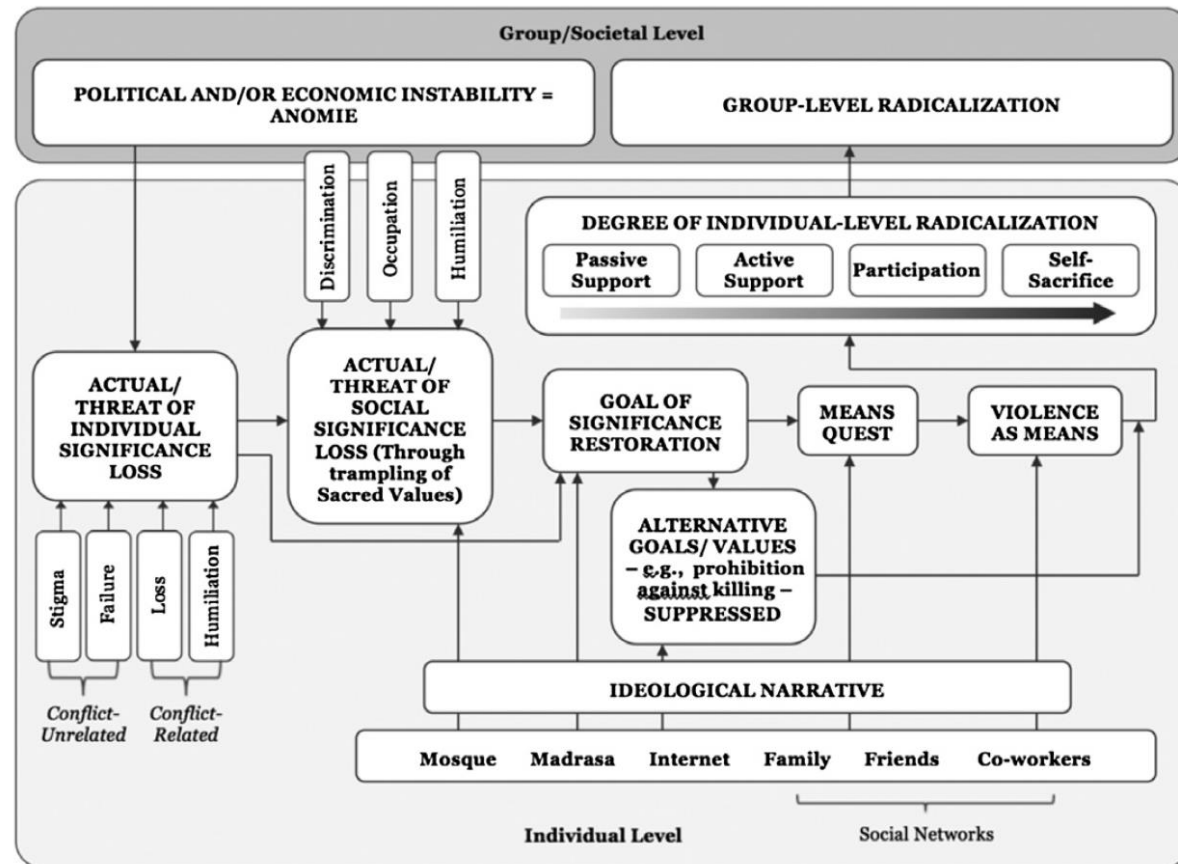
## 1.2 theoretical explanations of radicalization

### The “Two-Pyramids model of radicalization”



## 2. Causes and correlates of violent extremism

### The “quest for significance model of radicalization”



# 1.3 causes and correlates of radicalization

**Table 1**  
Seven approaches to the psychological mechanisms of radicalisation.

Theory	Central papers	Central tenets	Dependent variable	Explanatory variable(s)	Support - internal validity	Support - external validity	Support - measurement
Uncertainty-Identity Theory	Hogg & Adelman (2013)	Motivational and social identity theory	Joining and supporting radical groups Autocratic leadership Behavioural aggression and hostility	Self-uncertainty Group entitativity Social identity complexity Peripheral membership	Strong	Moderate	Area of focus
Significance Quest/"3N"	Webber & Kruglanski (2018)	Social psychological motivational theory	Coming to see as socially normative violent behaviour that is deviant from the majority perspective	Need for significance Narratives legitimising violence Networks and groups	Area of focus	Strong	Moderate
Devoted Actor Model	Atran (2016)	Ideology, values	Unconditional commitment, sacrifice and willingness to engage in extreme behaviour for a group	Sacred values Identity fusion	Moderate	Strong	Moderate
Mindset and Worldview	Borum (2014)	Distinction between mindset factors and worldview factors	Psychological "climate" that increases the risk of involvement in violent extremism	Psychological mindset: authoritarianism	Area of focus	Area of focus	Area of focus
Reactive Approach Motivation	McGregor, Hayes, & Prentice (2015)	Motivational framework encompassing personality and social dynamics	Aggressive religious radicalisation	Motivational processes diverted through interaction between personality, threats and group affordances	Area of focus	Moderate	Moderate
Two-pyramid approach	McCauley & Moskaleiko (2017)	Distinguishing opinion and action	Radical opinion (support) and radical action (behavioural intentions)	Individual factors Group factors Mass factors	Area of focus	Moderate	Strong

Gøtzsche-Astrup, Olaf (2018: 91): The time for causal designs: Review and evaluation of empirical support for mechanisms of political radicalisation. *Aggression and Violent Behavior* 39(1), 90-99.

## 1.3 causes and correlates of radicalization

**Table 2**

An overview of psychological mechanisms of radicalisation.

Strong empirical evidence	<ul style="list-style-type: none"><li>- Normal psychological mechanisms rather than psychopathology</li><li>- Motivational processes rather than instrumental calculations of risk and reward</li><li>- Negative life experiences that put the individual in flux in terms of fundamental questions</li><li>- Experience of fundamental uncertainty or loss of meaning or significance</li><li>- Shift in social identity towards a single social group rather than many</li><li>- Small group dynamics drive the process to behavioural extremes</li><li>- Heightened dispositional anxiety, aggression and impulsivity</li><li>- “Sacred values” as necessary in later stages of radicalisation</li></ul>
Moderate empirical evidence	<ul style="list-style-type: none"><li>- Psychological mindset of authoritarianism, dogmatism and fundamentalism</li><li>- Negative emotions, particularly anger and contempt</li></ul>
More research needed	<ul style="list-style-type: none"><li>- Other individual difference factors such as ambiguity, intolerance and need for cognitive closure</li><li>- The relative roles of uncertainty, significance, sacred values etc.</li><li>- The causal role of ideology: justification or cause?</li></ul>

Gøtzsche-Astrup, Olaf (2018: 91): The time for causal designs: Review and evaluation of empirical support for mechanisms of political radicalisation. *Aggression and Violent Behavior* 39(1), 90-99.



## 2.1 CVE impact and evaluation

Crisis of identity



## 2.1 CVE impact and evaluation



Life crisis  
(e.g. imprisonment)

## 2.1 CVE impact and evaluation



Loss of significance,  
reputation or status

## 2.1 CVE impact and evaluation

### Radical Peer-group (Social Network)



## 2.1 CVE impact and evaluation

Social deprivation

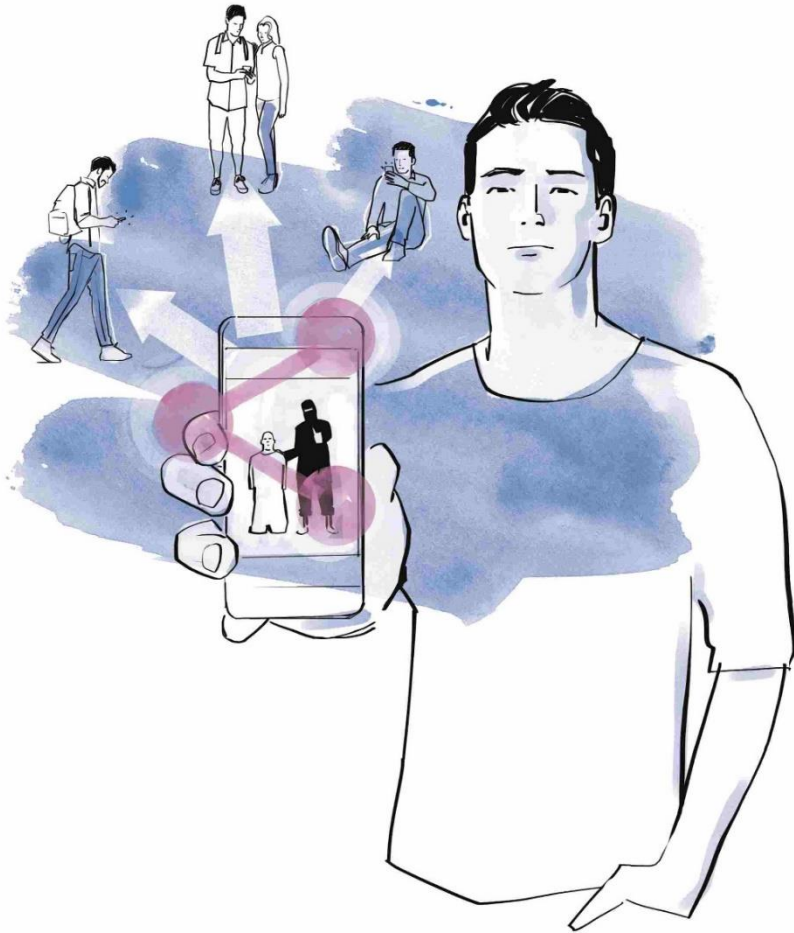


## 2.1 CVE impact and evaluation



Justifying terrorism and political violence

## 2.1 CVE impact and evaluation



Dissemination of propaganda

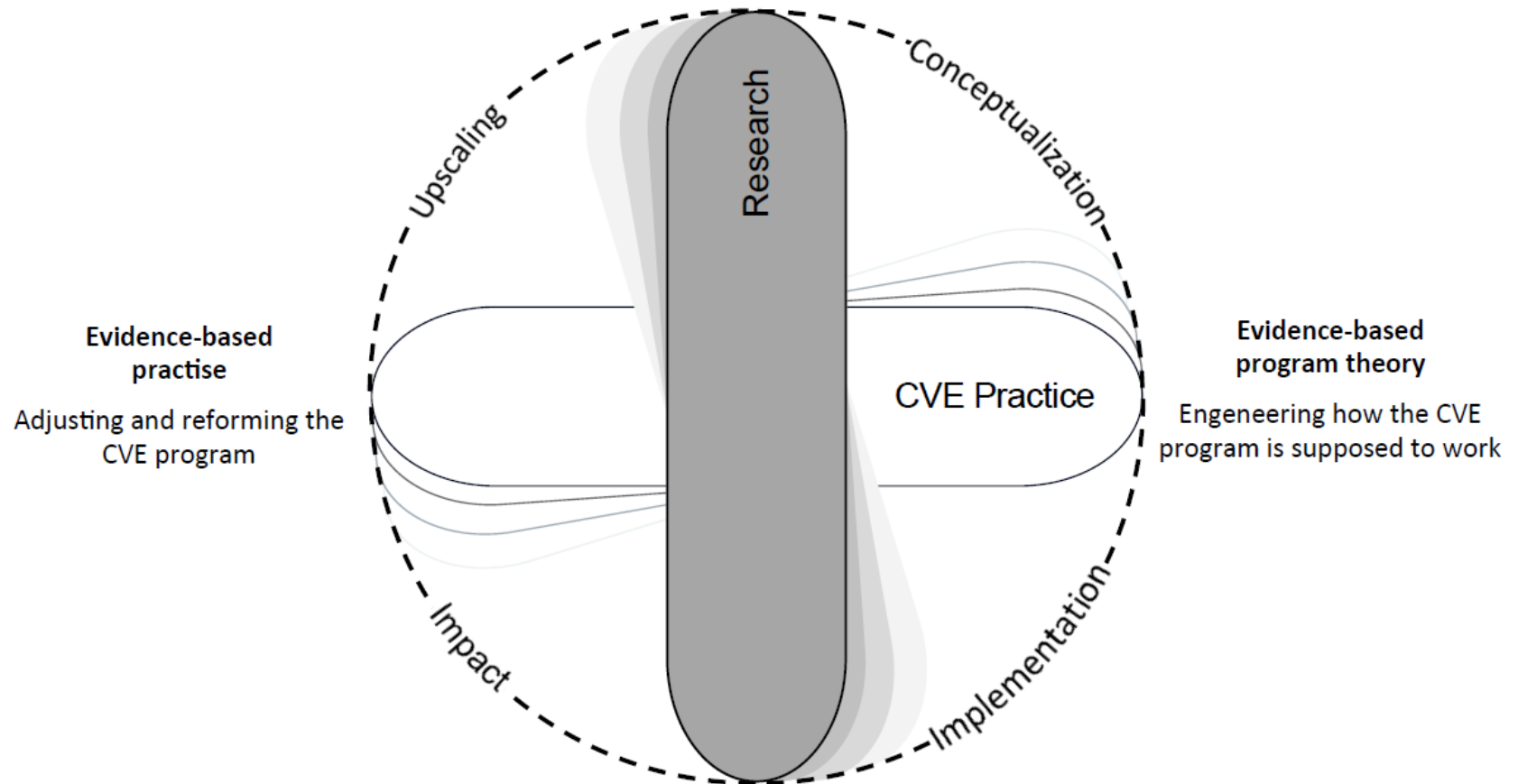
# Outline

1. What is evidence based PVE/CVE?
2. Evidence base I: causes and correlates of violent extremism
3. **Evidence base II: impact of PVE/CVE**
4. **Conclusion/outlook**



## Evidence Base I: Scientific Research

Generating and pooling data on causes, correlates and protective factors for violent extremism  
(individual, group, and structural factors)



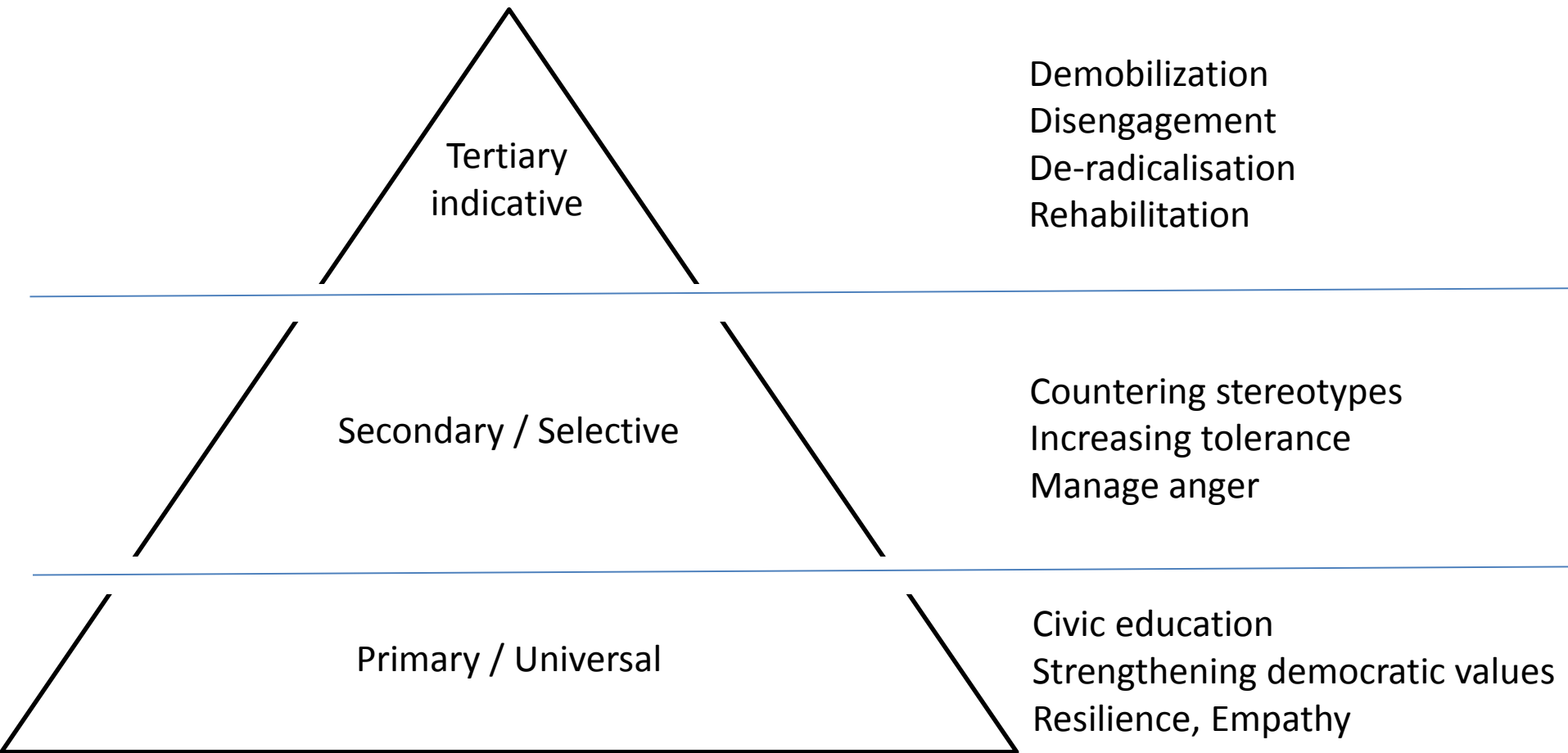
## Evidence Base II: Evaluation

Generating and pooling data on the actual impact of CVE practises

Creative Commons (CC BY-NC-ND)

NZK

# CVE/PVE



### 3 CVE impact and evaluation

## Impact of CVE: right wing extremism

Präventionsansatz	Wirksamkeit	wissenschaftl. Belastbarkeit	Übertragbarkeit	Theoretische Fundierung	Anzahl Evaluationsstudien	Evidenzindex
Aufsuchende Arbeit	?	<div><div></div><div></div><div></div><div></div><div></div></div>	<div><div></div><div></div><div></div><div></div><div></div></div>	<div><div></div><div></div></div>	1	(17)
Ausstiegshilfe	?	<div><div></div><div></div><div></div><div></div><div></div></div>	<div><div></div><div></div><div></div><div></div><div></div></div>	<div><div></div><div></div></div>	4	(28)
Deradikalisierung	?	<div><div></div><div></div><div></div><div></div><div></div></div>	<div><div></div><div></div><div></div><div></div><div></div></div>	<div><div></div><div></div></div>	4	(24)
Multiplikatorenschulung	?	<div><div></div><div></div><div></div><div></div><div></div></div>	<div><div></div><div></div><div></div><div></div><div></div></div>	<div><div></div><div></div></div>	5	(23)
Sozialer Trainingskurs	+/-	<div><div></div><div></div><div></div><div></div><div></div></div>	<div><div></div><div></div><div></div><div></div><div></div></div>	<div><div></div><div></div></div>	20	(43)

<https://www.nzkrim.de/wespe>

### 3 CVE impact and evaluation

## Impact of CVE: Islamism

Präventionsansatz	Wirksamkeit	wissenschaftl. Belastbarkeit	Übertragbarkeit	Theoretische Fundierung	Anzahl Evaluationsstudien	Evidenzindex
Deradikalisierung	?	□□□□□	□□□□□	□□	4	(24)
Interreligiöses Lernen	?	□□□□□	□□□□□	□□	2	(5)
Multiplikatorenschulung	?	□□□□□	□□□□□	□□	5	(23)
Sozialer Trainingskurs	+ <sup>-</sup>	□□□□□	□□□□□	□□	20	(43)

<https://www.nzkrim.de/wespe>

# Outline

1. What is evidence based PVE/CVE?
2. Evidence base I: causes and correlates of violent extremism
3. Evidence base II: impact of CVE Practises
4. **Conclusion/outlook**

# Thank you for your attention



**Dr. Andreas Armborst**  
**Head of Research**

c/o Federal Ministry of the Interior, Building and Community  
Graurheindorfer Str. 198  
53117 Bonn, Germany  
☎ + 49 228 / 99681-3234  
✉ [andreas.armborst@bmi.bund.de](mailto:andreas.armborst@bmi.bund.de)  
💻 [www.nzkrim.de](http://www.nzkrim.de)

**Funded by**

