



CEDEUS
Centro de Desarrollo
Urbano Sustentable

The role of travel's experience, transport disadvantage, and the social context of travel behaviour

Juan Antonio Carrasco
Department of Civil Engineering
Universidad de Concepción, Chile



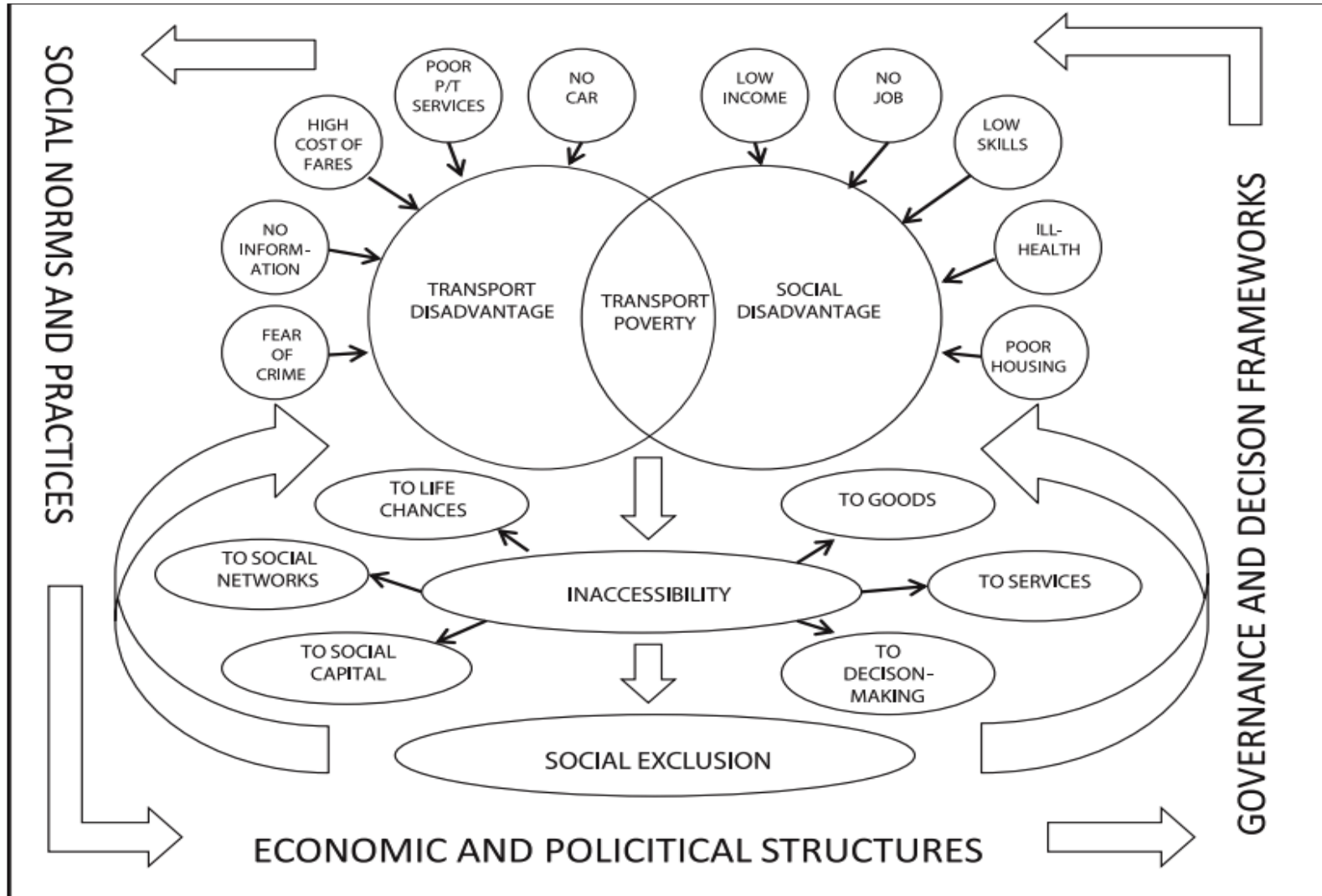
**Universidad
de Concepción**



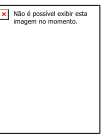
Contents

- The insufficiently explored focus on income
- Transport mode / Travel's barriers
- Social networks and mobility

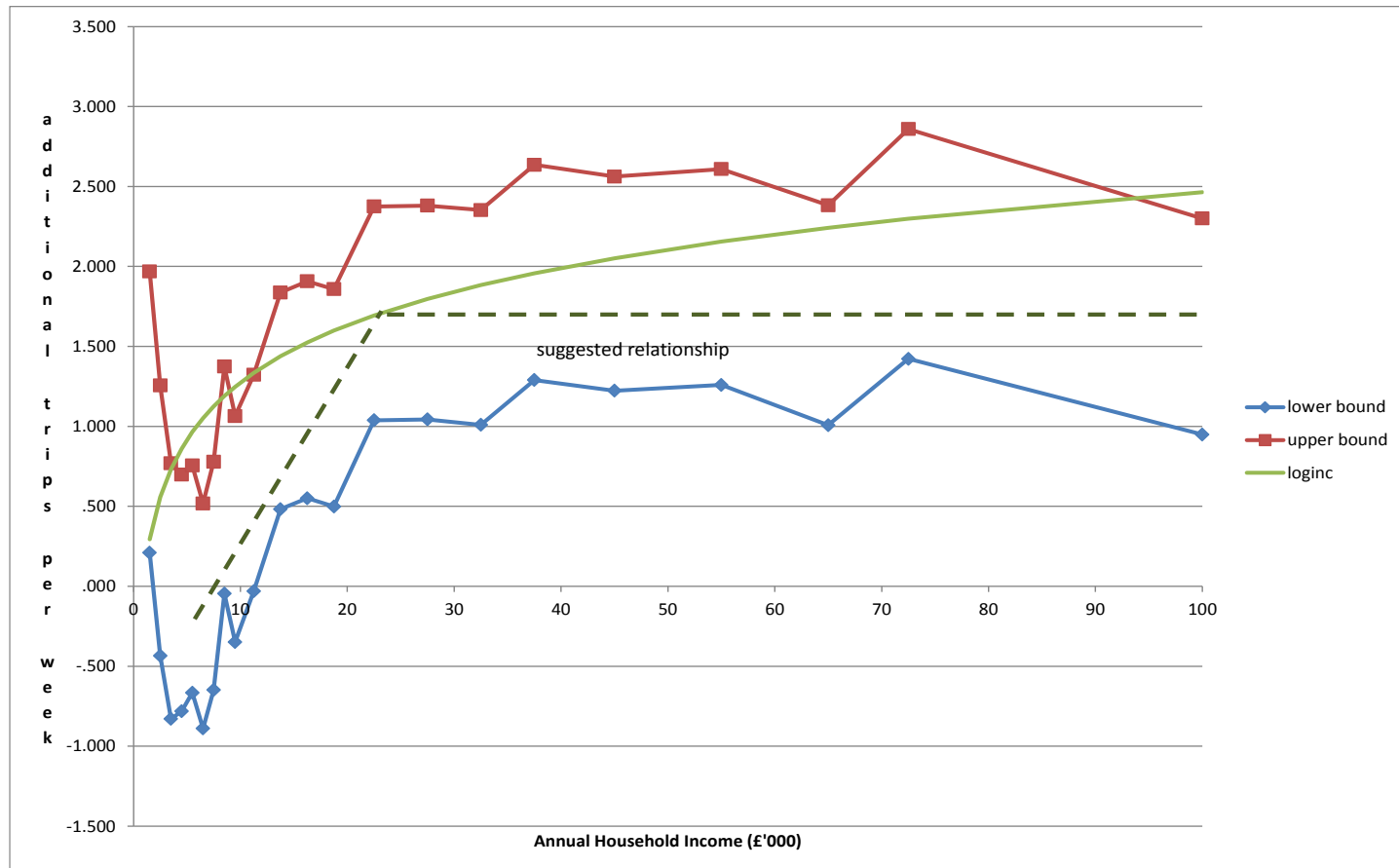
The (insufficiently explored) focus on income



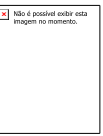
The (insufficiently explored) focus on income



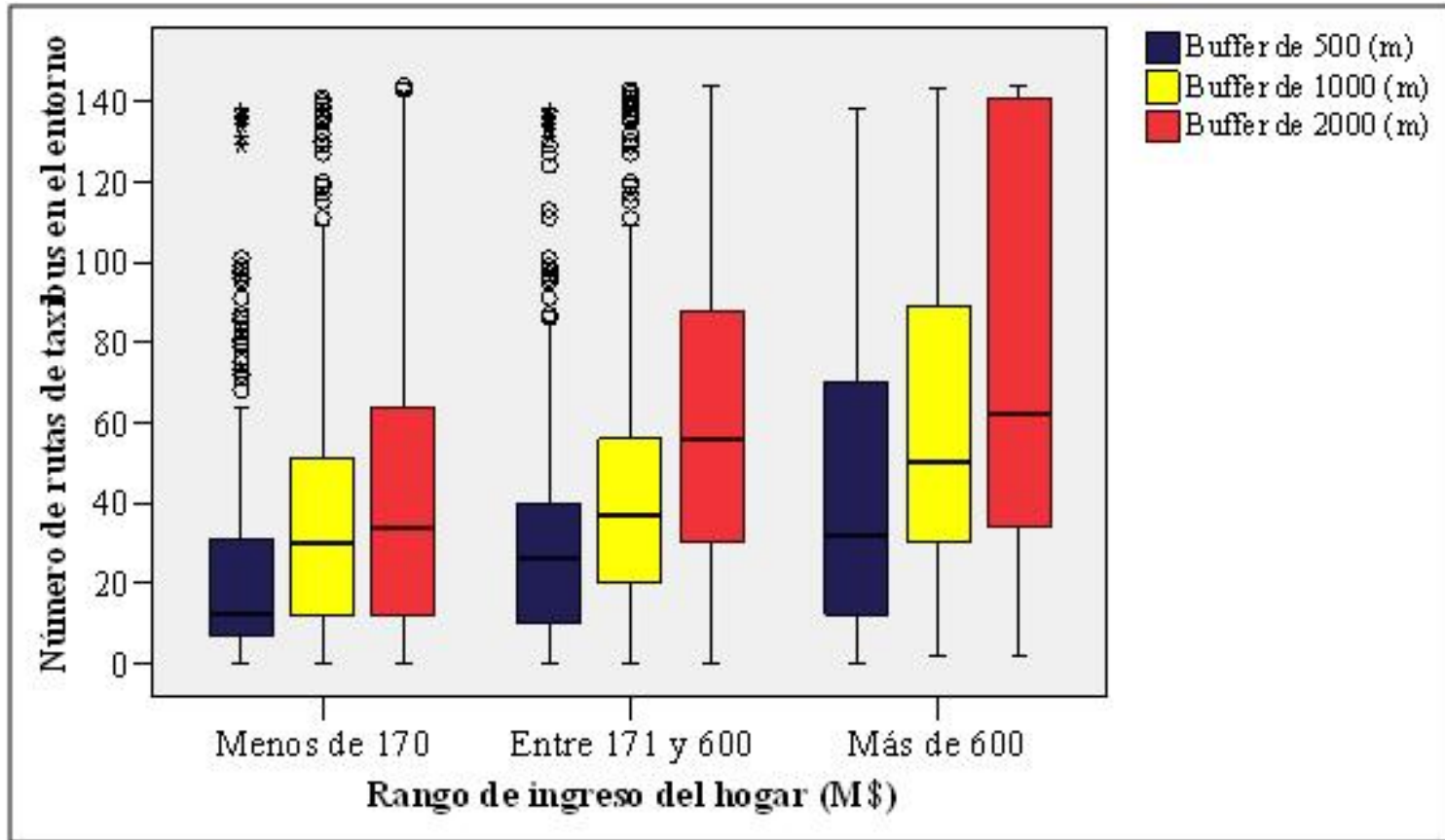
Trip generation – UK National Household Travel Survey

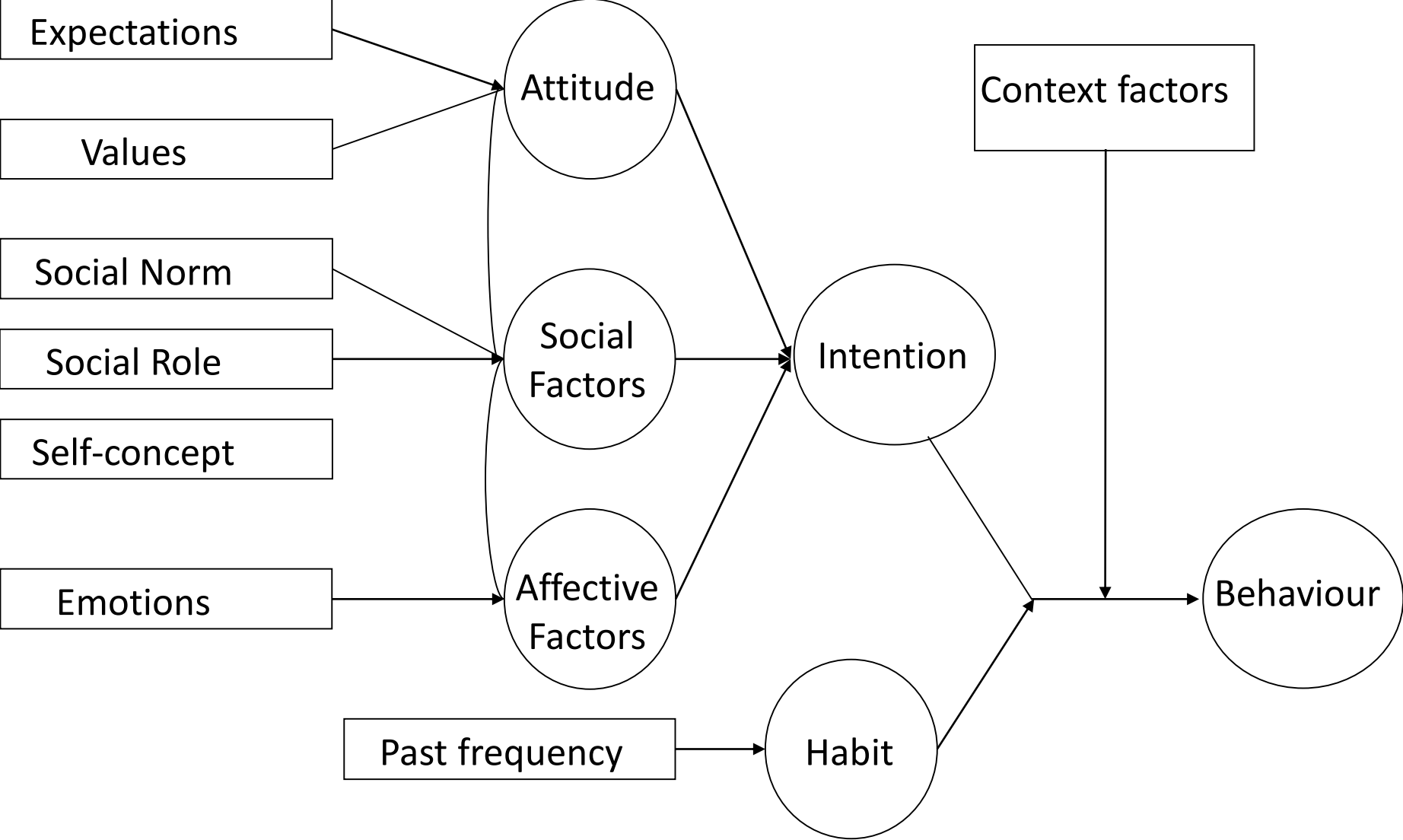


The (insufficiently explored) focus on income

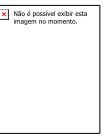


Number of bus routes by income in the Greater Concepción Area (1999)

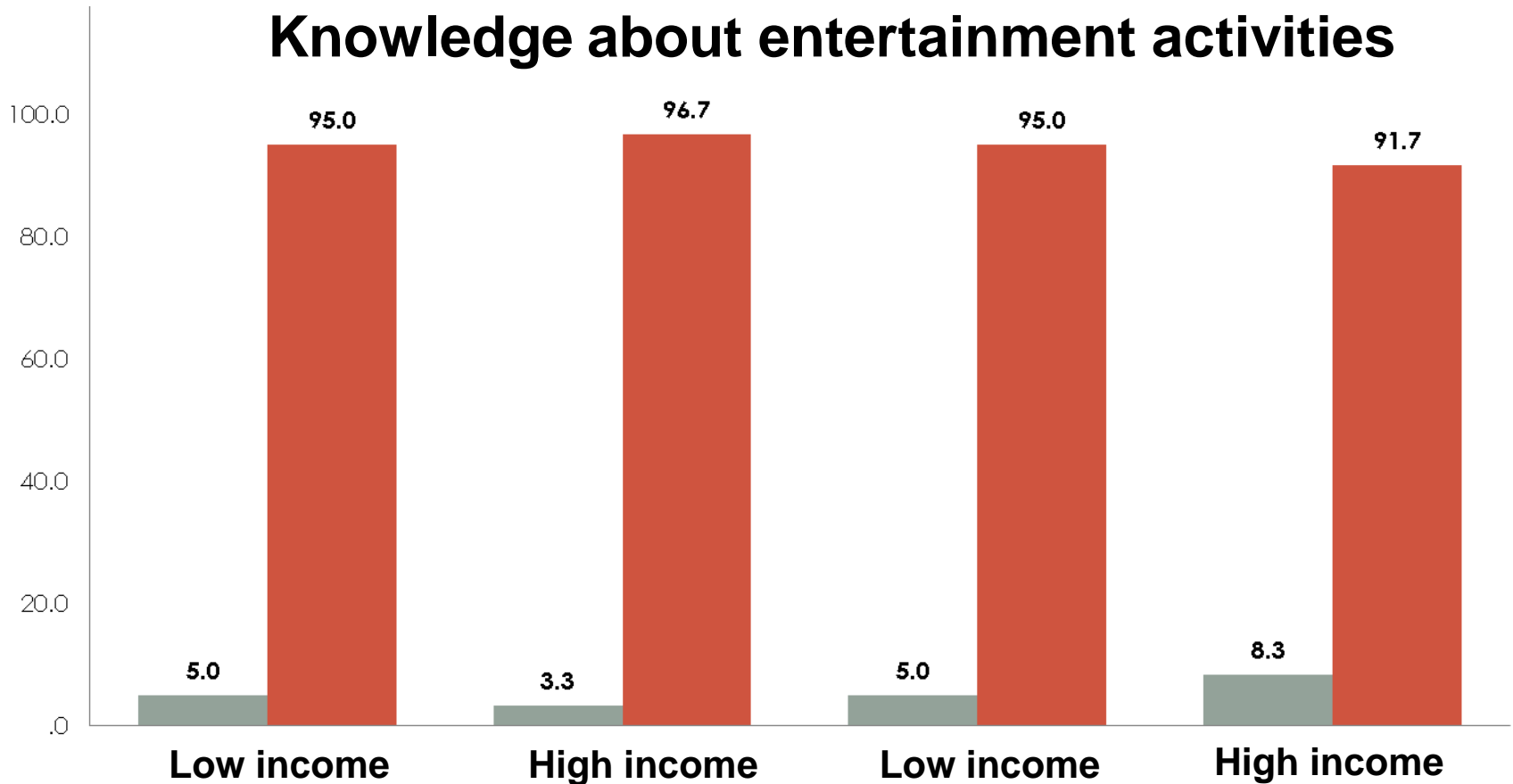




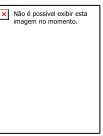
Knowledge and experience on performing activities



- Potential versus performed activities and travel
- Availability versus capability

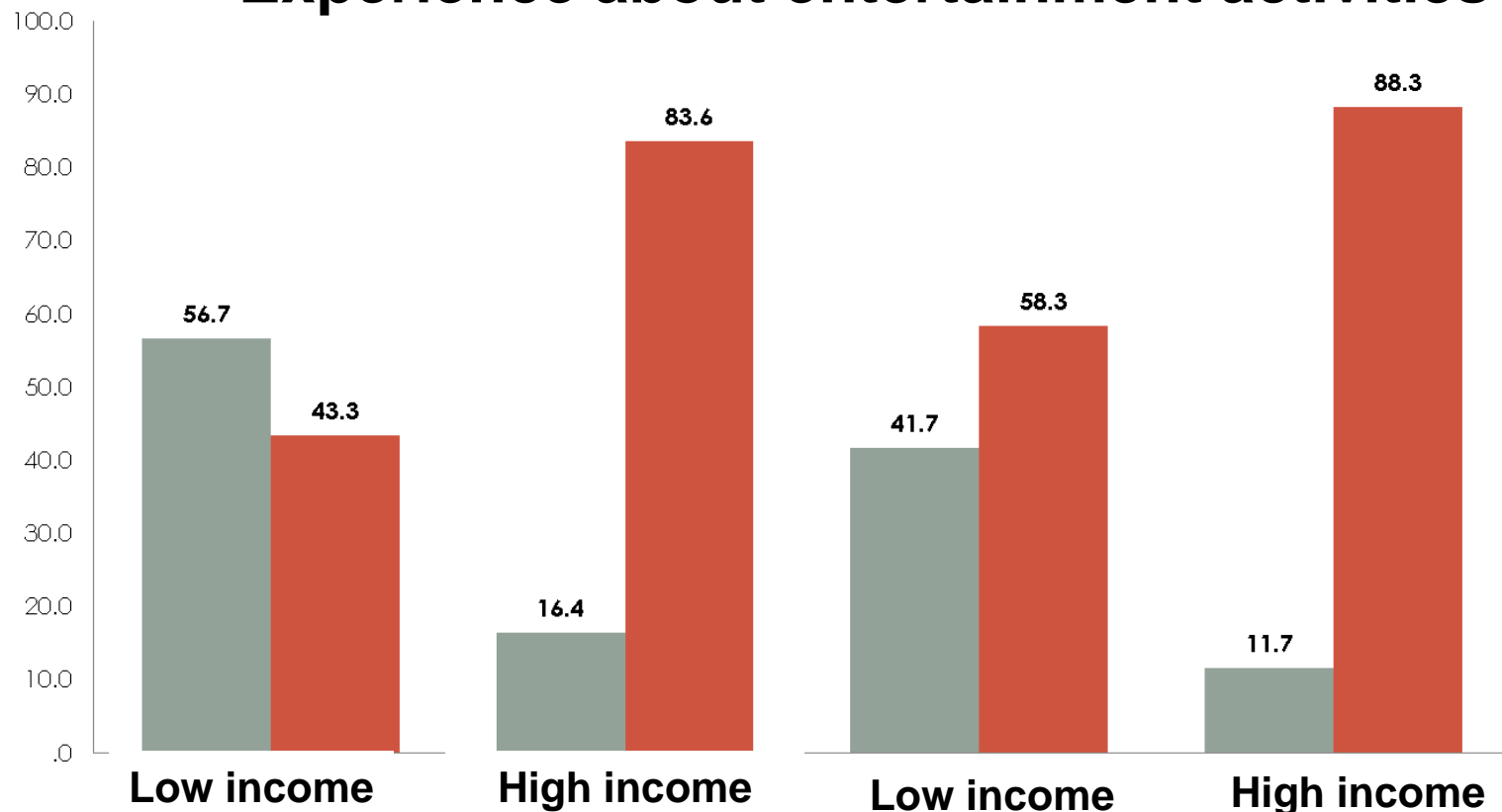


Knowledge and experience on performing activities

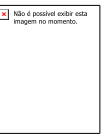


- Potential versus performed activities and travel
- Availability versus capability

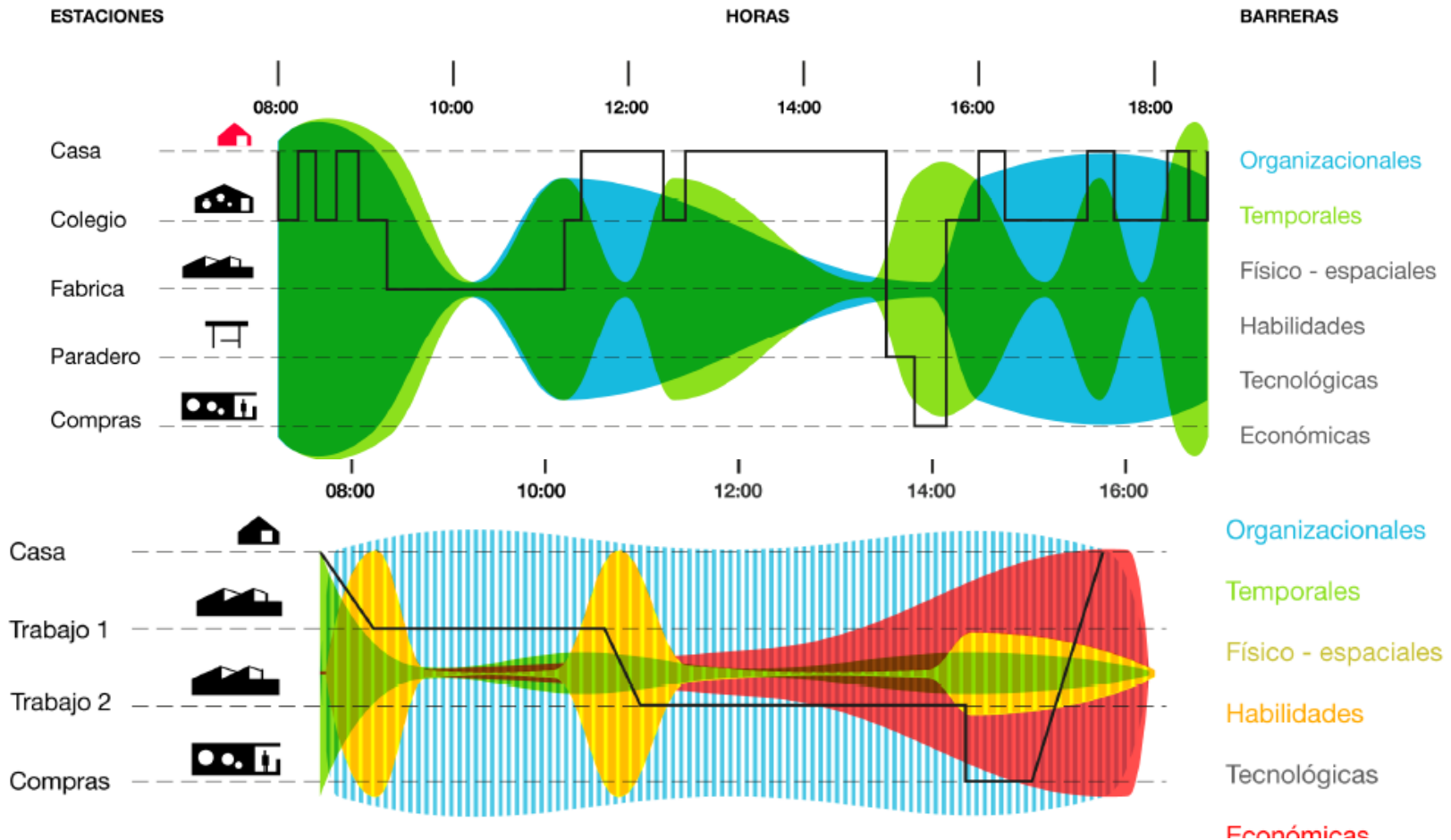
Experience about entertainment activities



Urban segregation, encounterability and urban experience

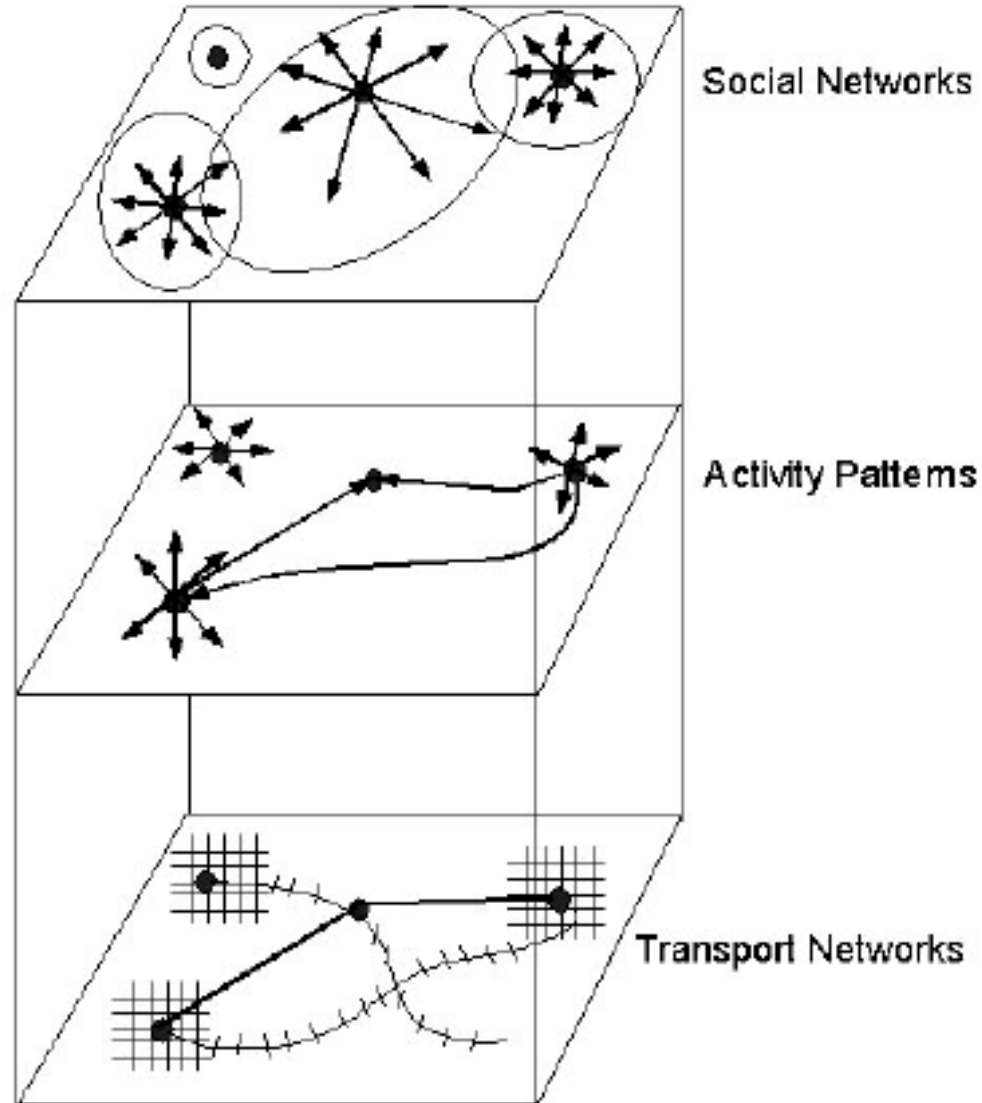


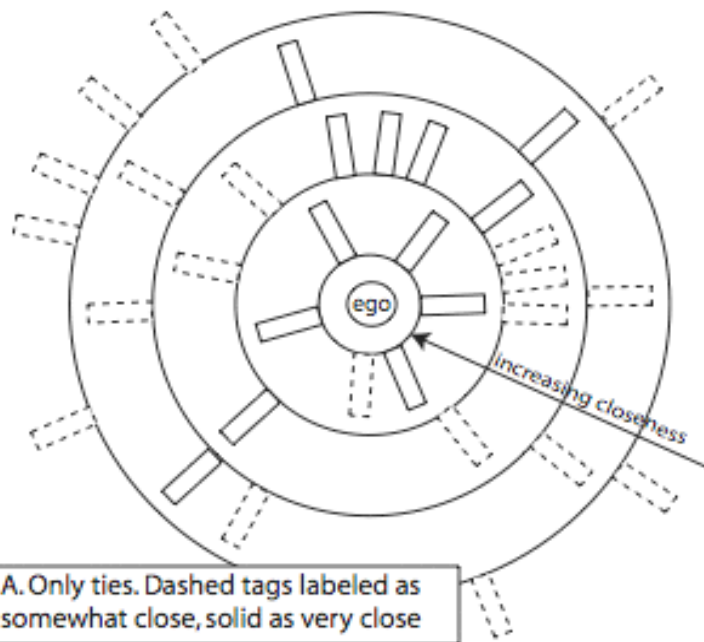
Urban experience and transport-related barriers



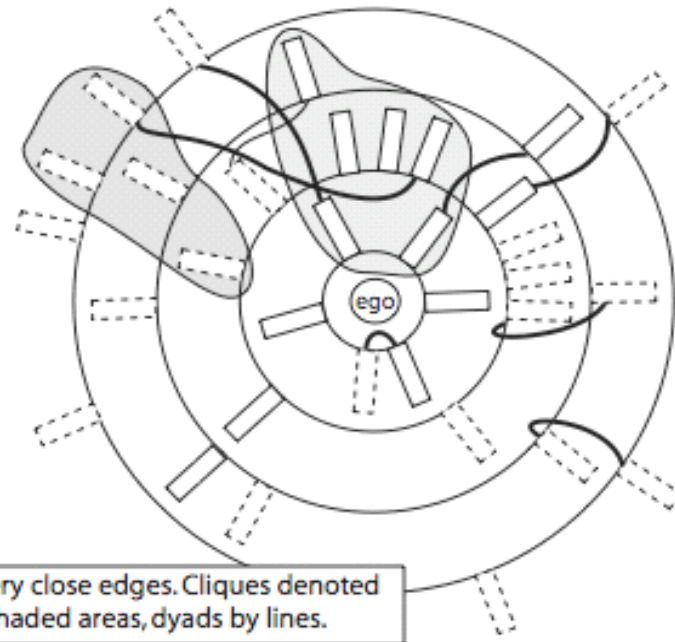
(Jirón, 2013)

Social networks and mobility

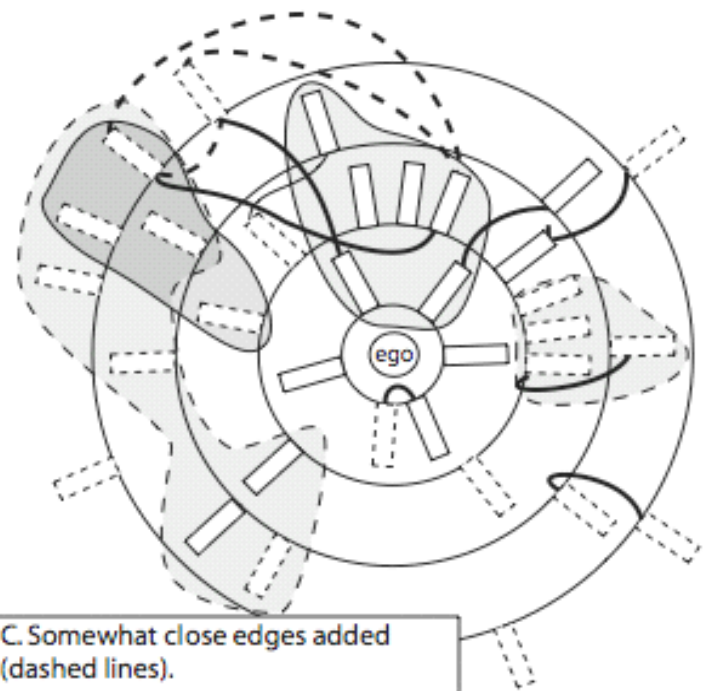




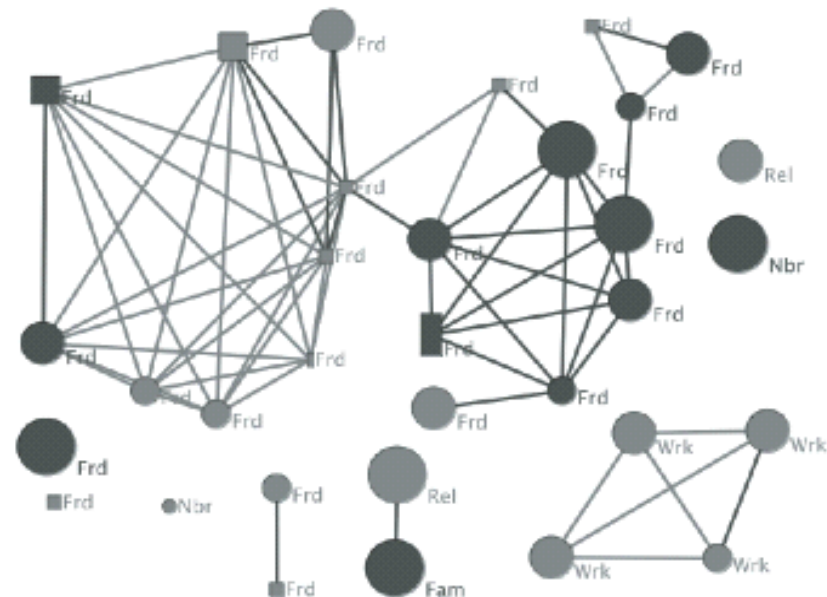
A. Only ties. Dashed tags labeled as somewhat close, solid as very close



B. Very close edges. Cliques denoted by shaded areas, dyads by lines.



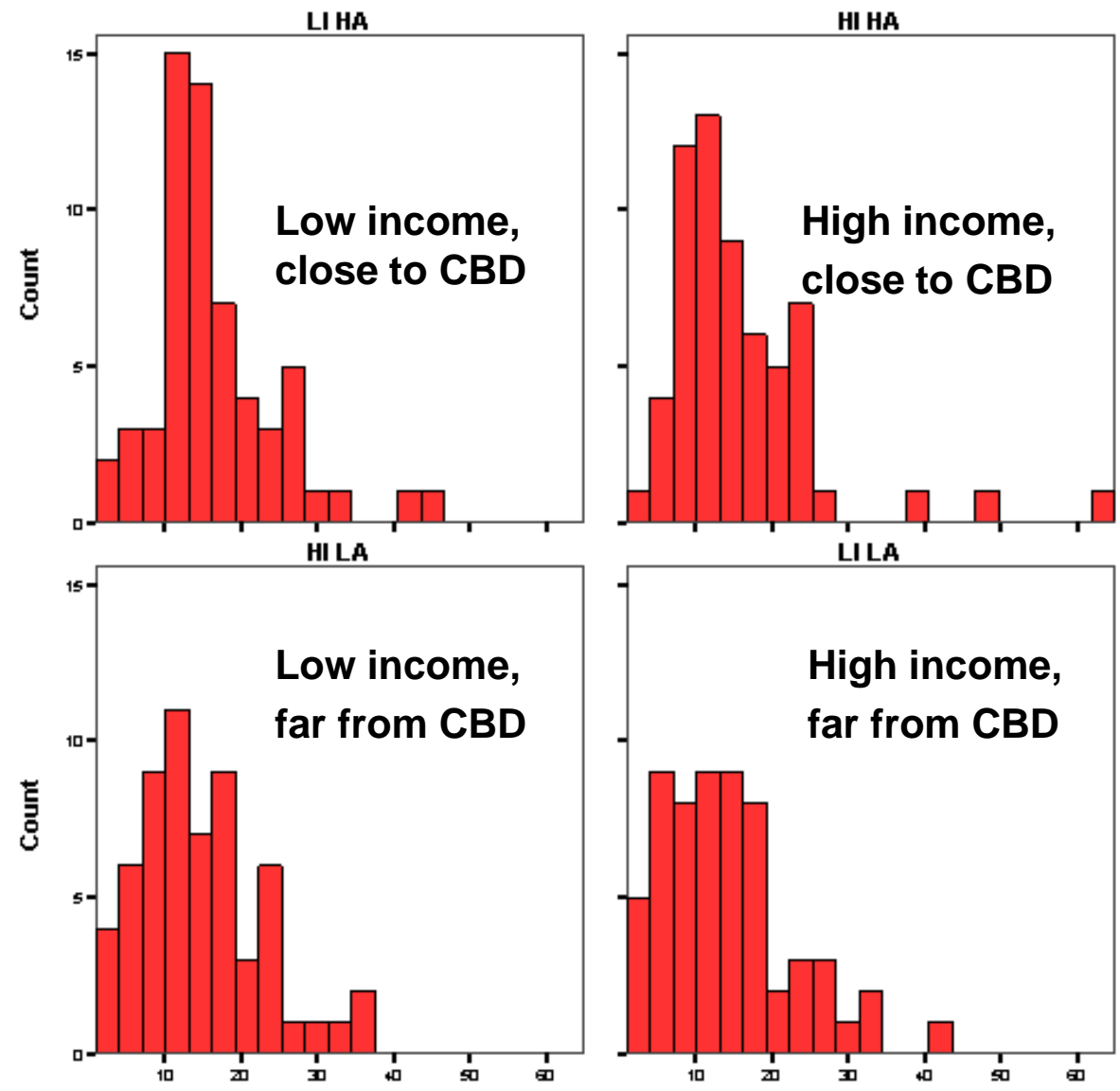
C. Somewhat close edges added (dashed lines).



D. Graph represented using GUESS. Labels denote role, size denotes ring. Circle: female, square: male.

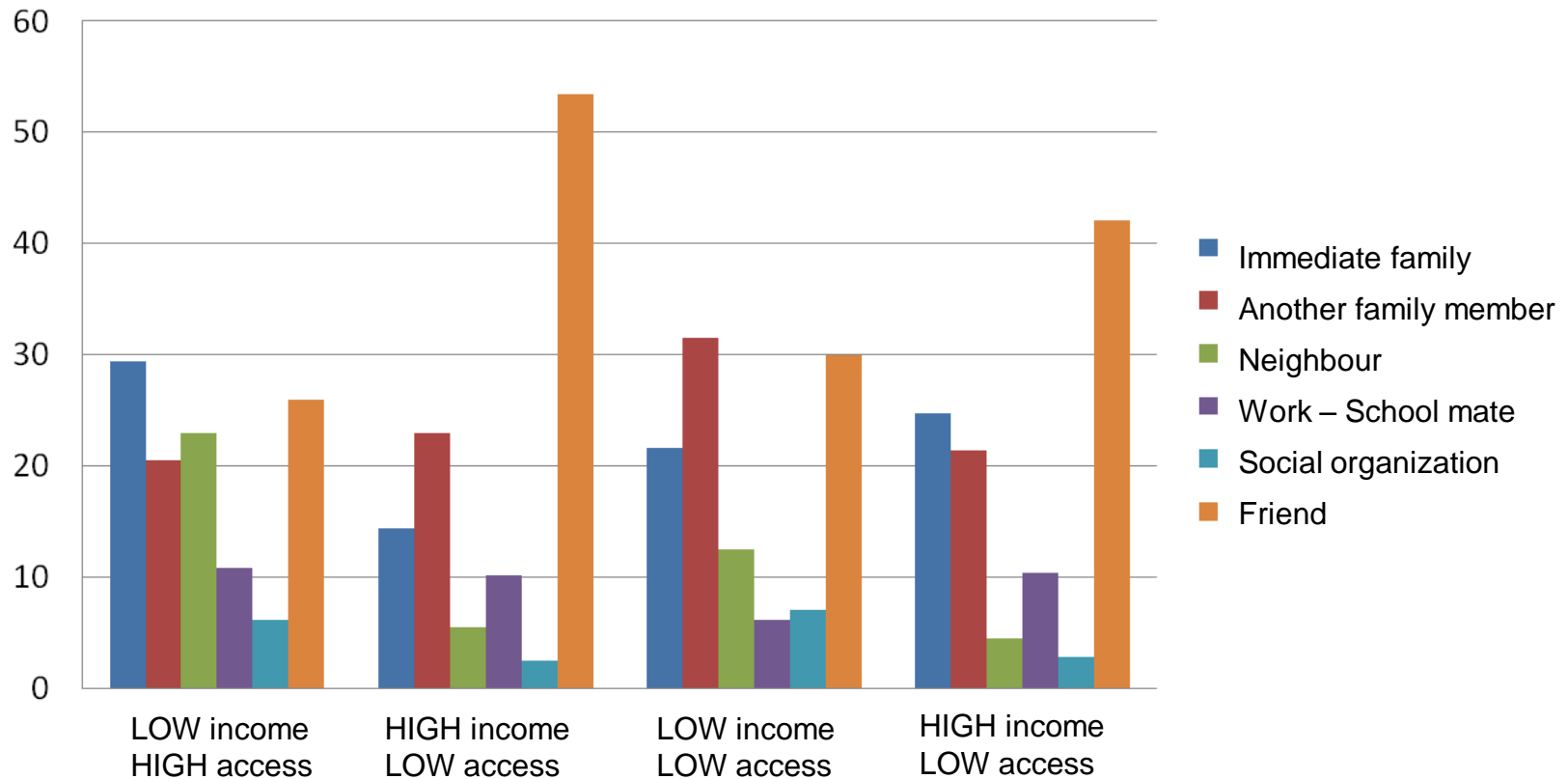
Personal Network Characteristics

Personal network sizes



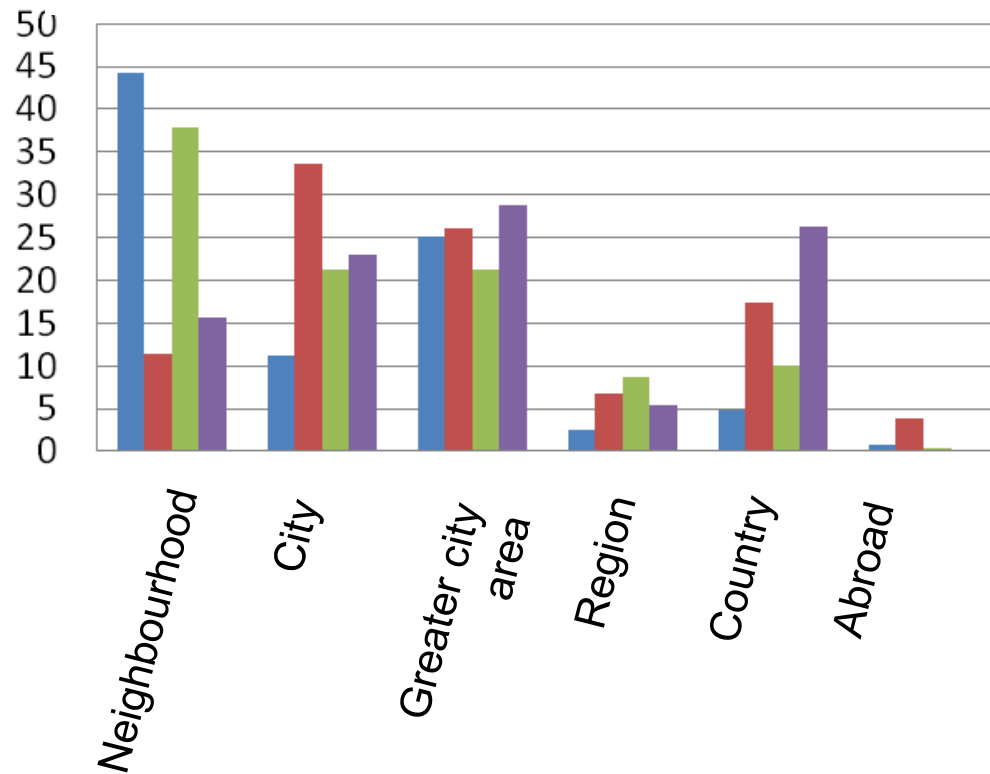
Does distance matter in social encounters?

Alter's role



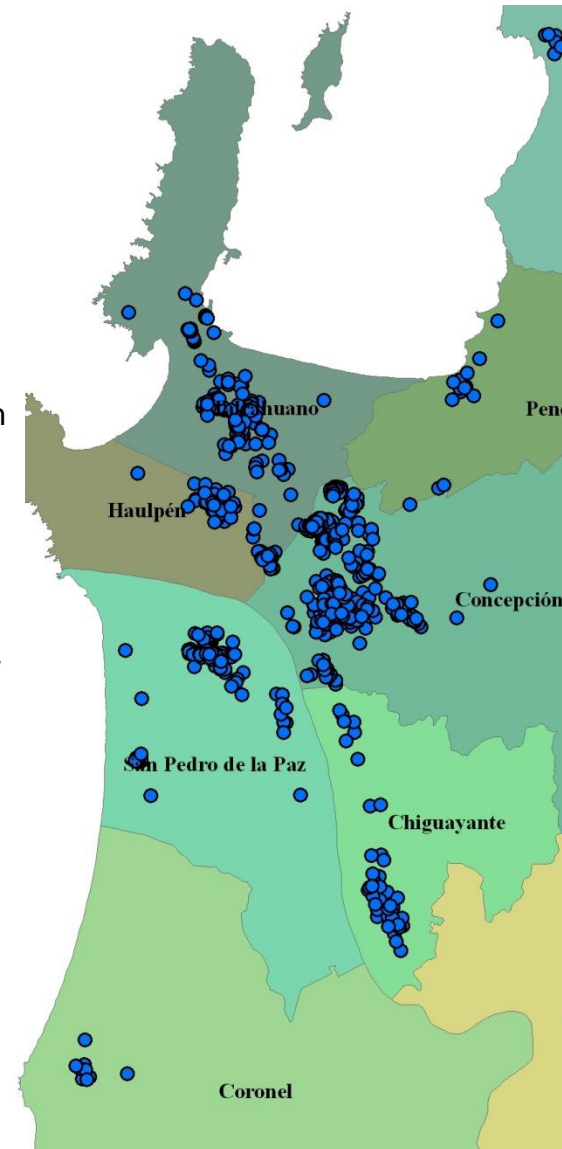
Does distance matter in social encounters?

Personal network's spatiality

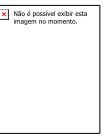


- Low income, high access
- High income, high access
- Low income, low access
- High income, low access

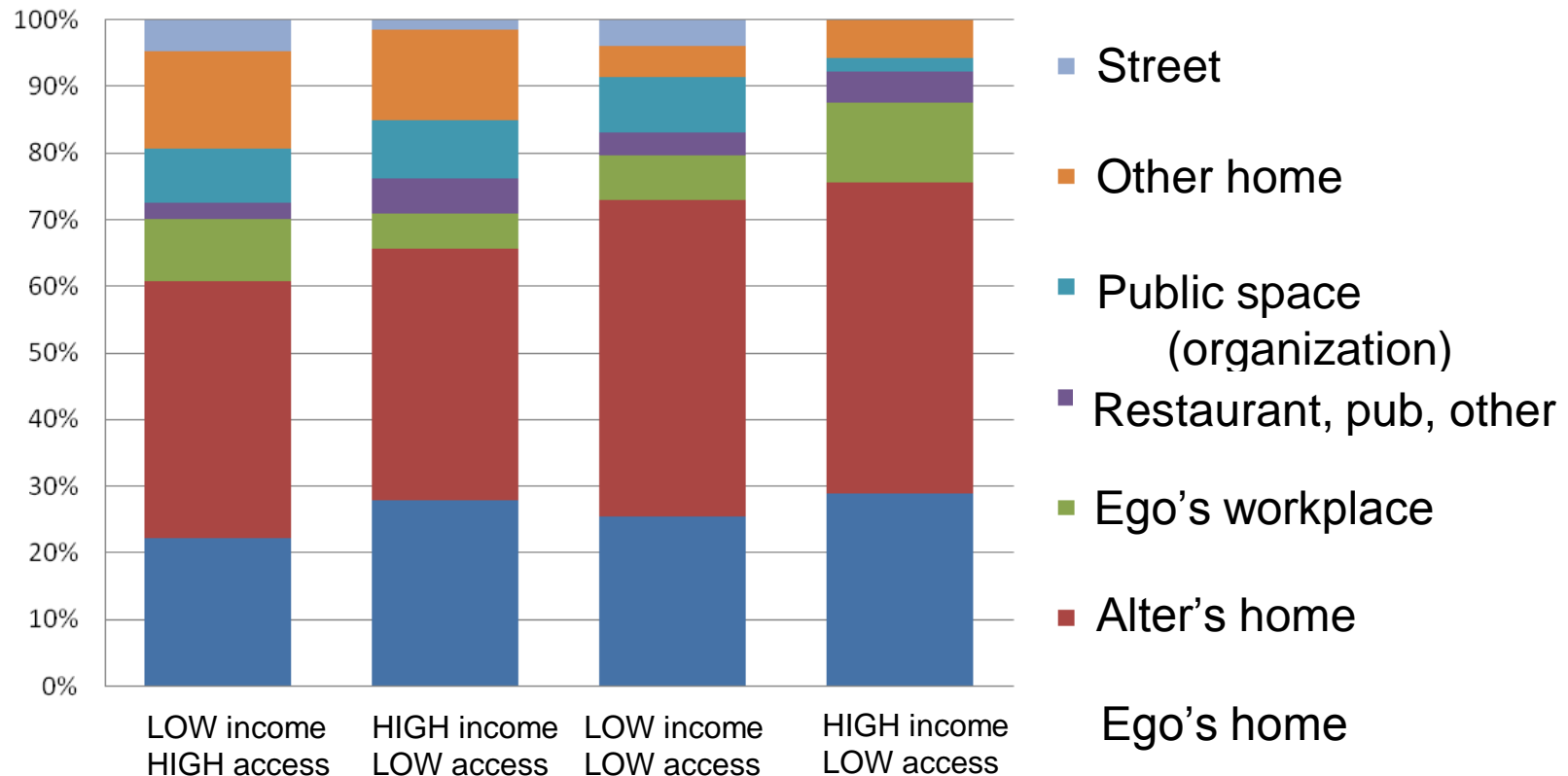
N



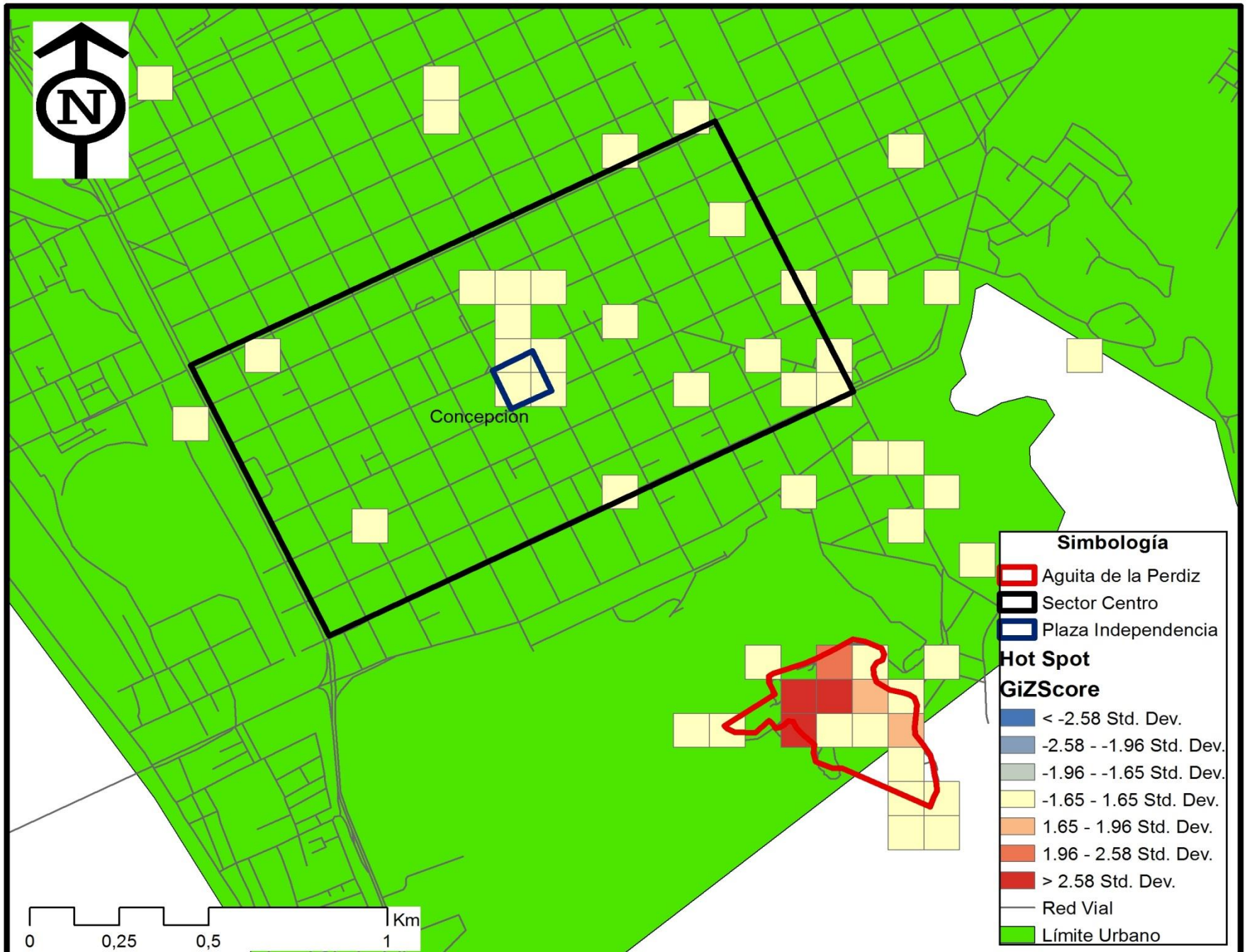
Does distance matter in social encounters?



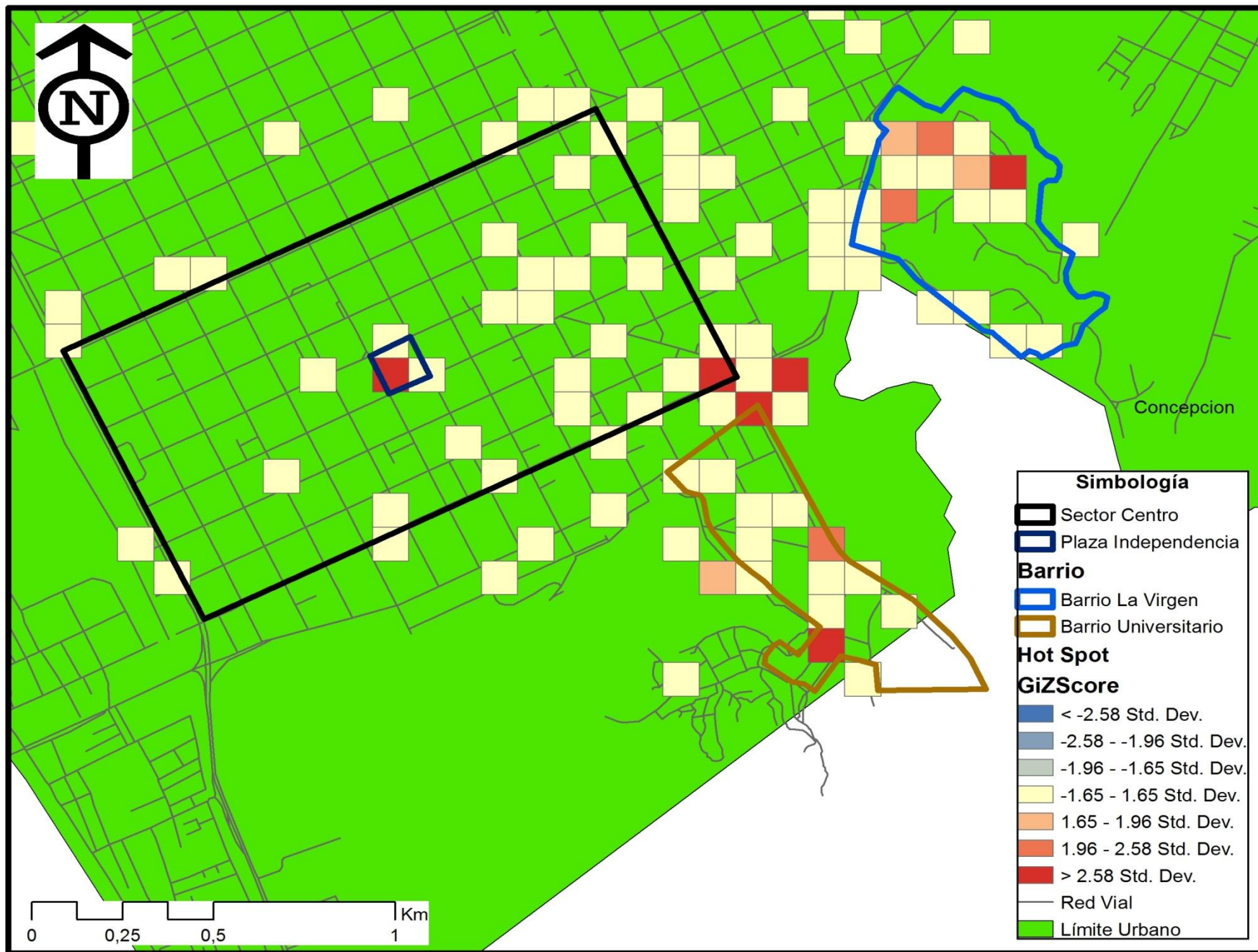
Place of frequent interaction



Hot Spot de Lugar de Interacción Más Frecuente: Barrio Aguita de la perdiz



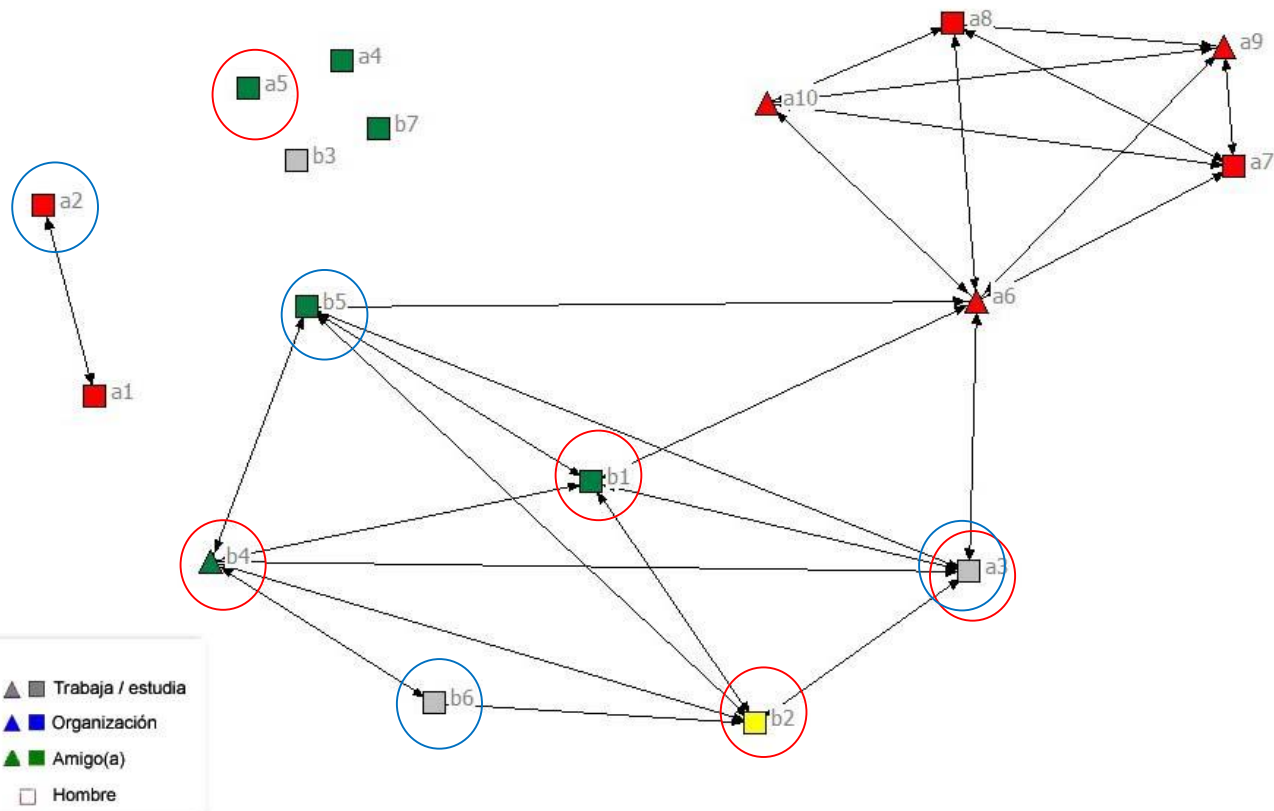
Hot Spot de Lugar de Interacción Más Frecuente: Barrio La Virgen



¿With whom you interact more frequently?

EGO 101

Casado
56 Años



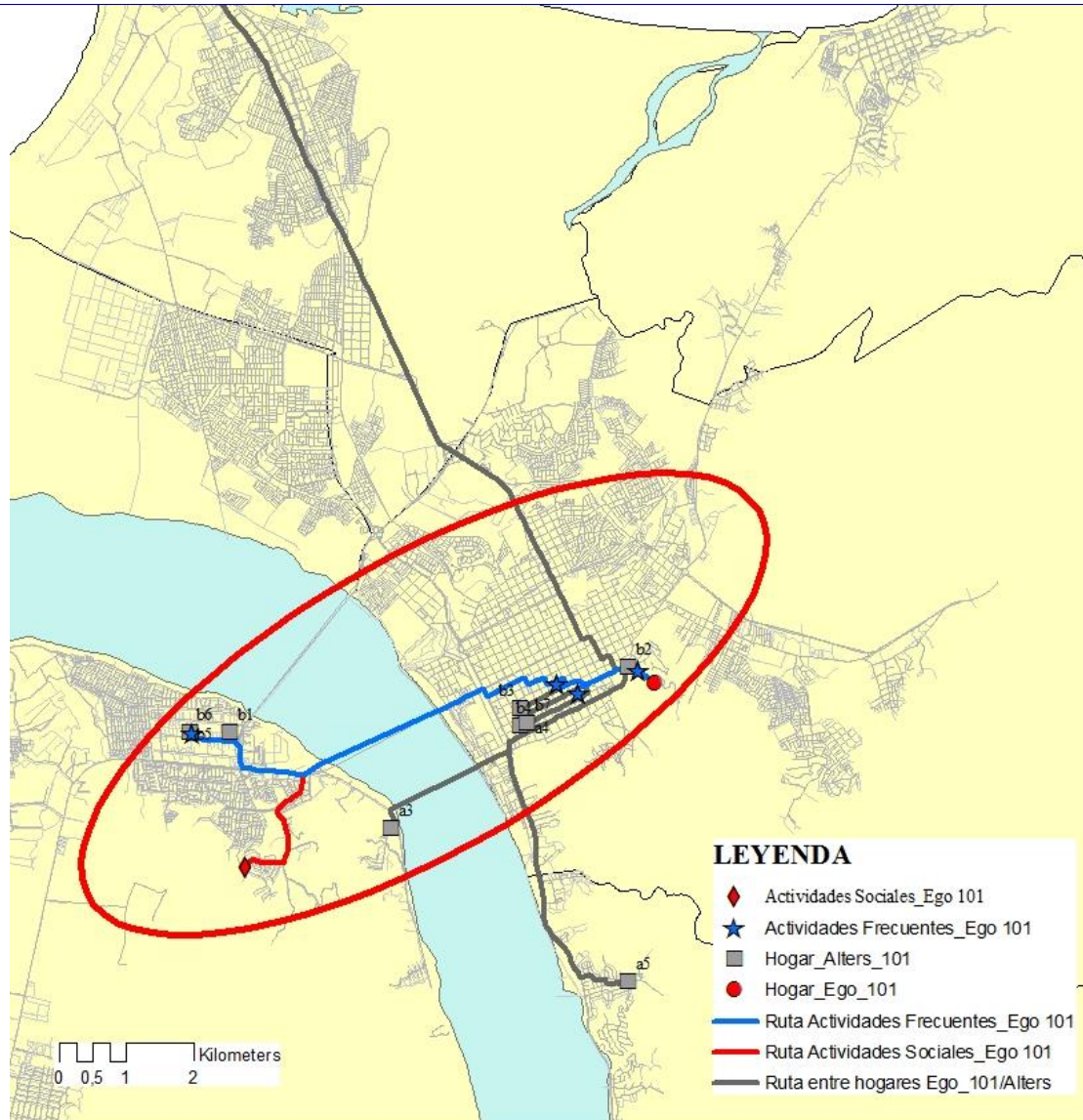
LEYENDA

- | | |
|-------------------|-----------------------|
| ▲ ■ Familiar | ▲ ■ Trabaja / estudia |
| ▲ ■ Otro Familiar | ▲ ■ Organización |
| ▲ ■ Vecino(a) | ▲ ■ Amigo(a) |
| ▲ ■ Mujer | □ ■ Hombre |

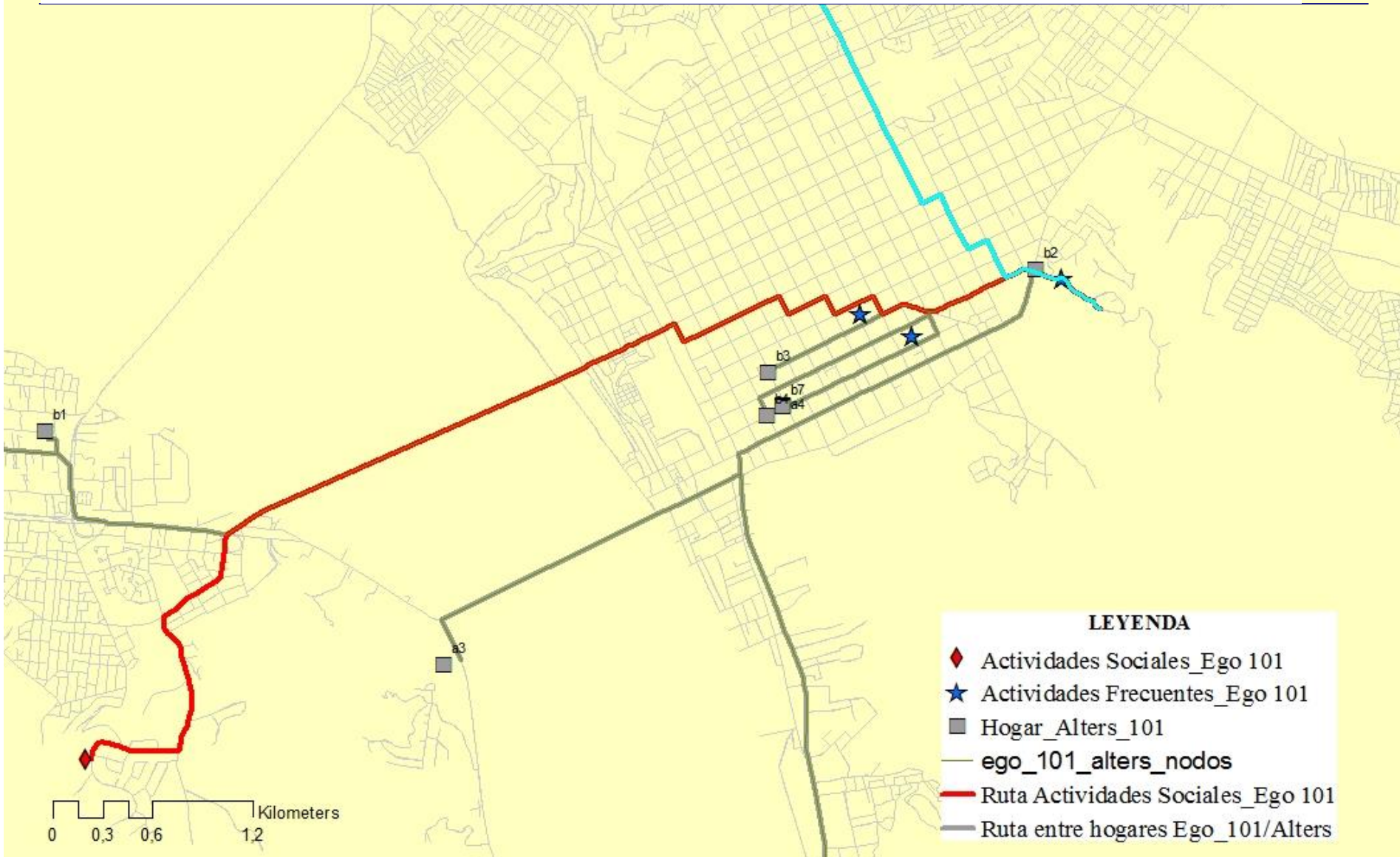
¿With whom you socialize more frequently?

Urban segregation, encounterability and urban experience

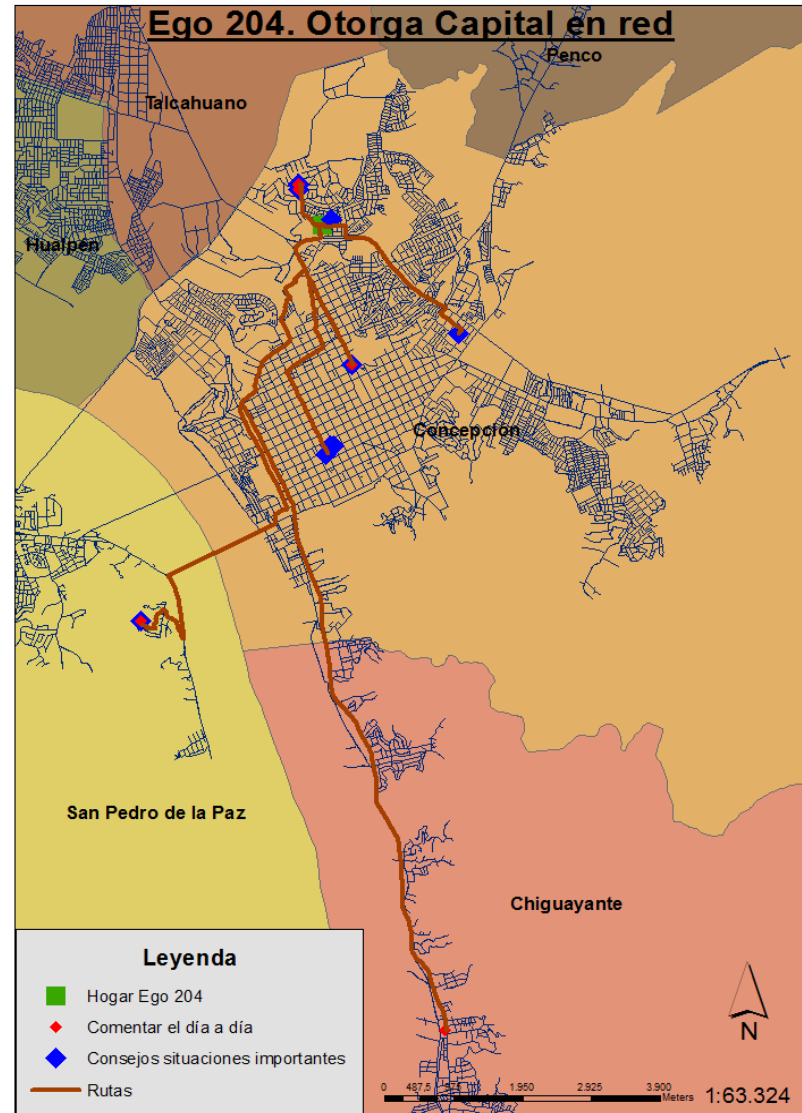
⚠ No se puede ver esta imagen en el momento.



Urban segregation, encounterability and urban experience



Network capital





CEDEUS
Centro de Desarrollo
Urbano Sustentable

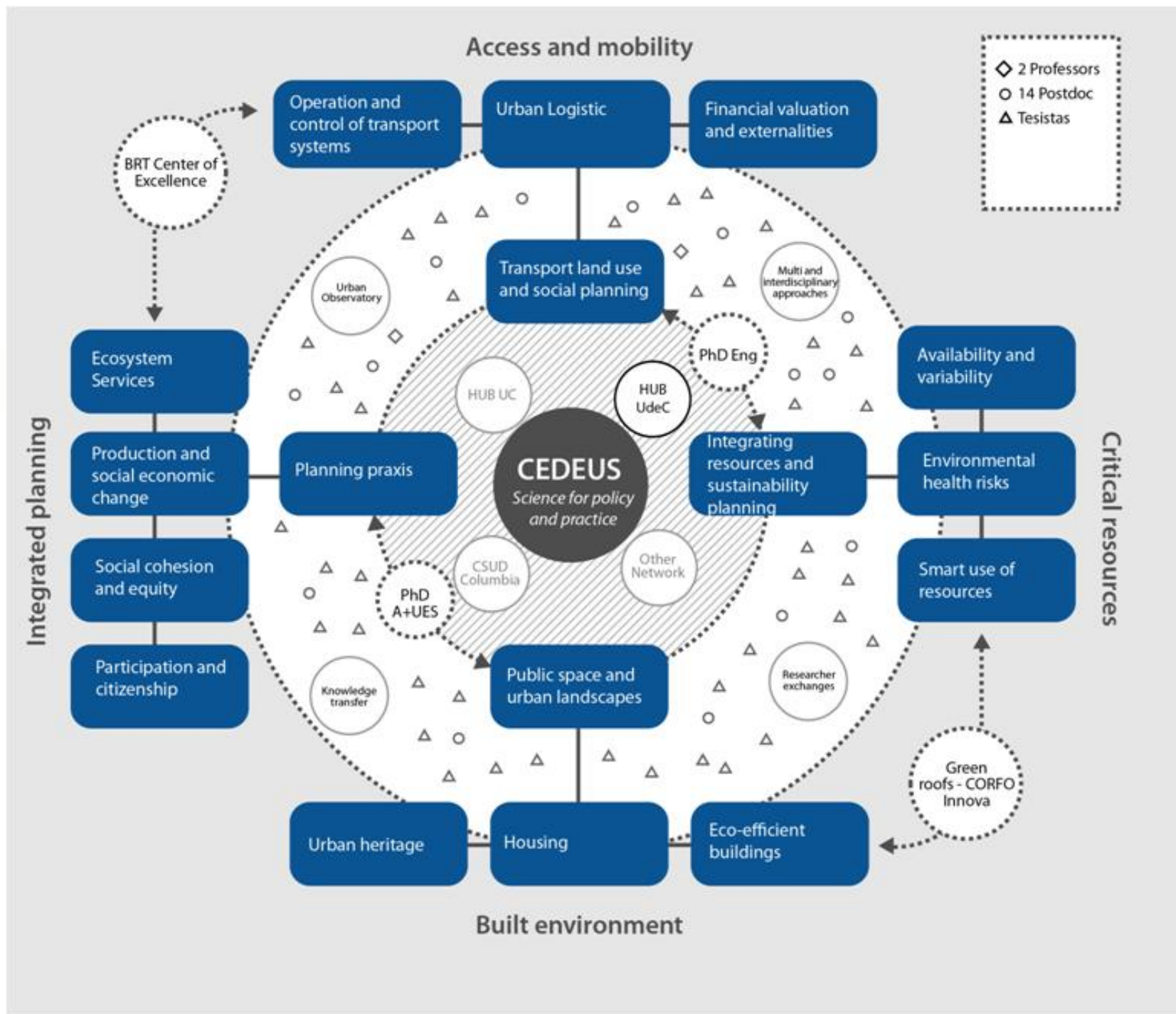
The role of travel's experience, transport disadvantage, and the social context of travel behaviour

Juan Antonio Carrasco
Department of Civil Engineering
Universidad de Concepción, Chile



**Universidad
de Concepción**





Access and mobility

- ◇ 2 Professors
- 14 Postdoc
- △ Tesisas

BRT Center of Excellence

Operation and control of transport systems — Urban Logistic — Financial valuation and externalities

Transport land use and social planning

Multi and interdisciplinary approaches

Ecosystem Services

Planning praxis

CEDEUS
Science for policy and practice

Integrating resources and sustainability planning

Availability and variability

Integrated planning

Production and social economic change

Social cohesion and equity

Participation and citizenship

Public space and urban landscapes

Integrating resources and sustainability planning

Environmental health risks

Smart use of resources

Critical resources

Urban heritage

Housing

Eco-efficient buildings

Built environment

Green roofs - CORFO Innova