



The Flemish departement of Economy, Science and Innovation

Research and Innovation Landscape in Flanders

Structure of the Belgian State

BELGIUM
THE FEDERAL STATE



BELGIUM:

= federal country

- 1 Federal Authority
- 3 Communities (~ territorial matters)
- 3 Regions (~personal matters)

no hierarchy between various governing levels & legal norms

the various authorities can execute their powers fully *autonomously* incl. at the *international* policy level (treaties...)

FLANDERS:

one set of institutions for both levels of the Region and the Community

THE COMMUNITIES

THE FLEMISH COMMUNITY



THE FRENCH COMMUNITY



THE GERMAN-SPEAKING COMMUNITY



THE REGIONS

THE FLEMISH REGION



THE BRUSSELS-CAPITAL REGION



THE WALLOON REGION



Education, Culture, Science

Economy, Innovation

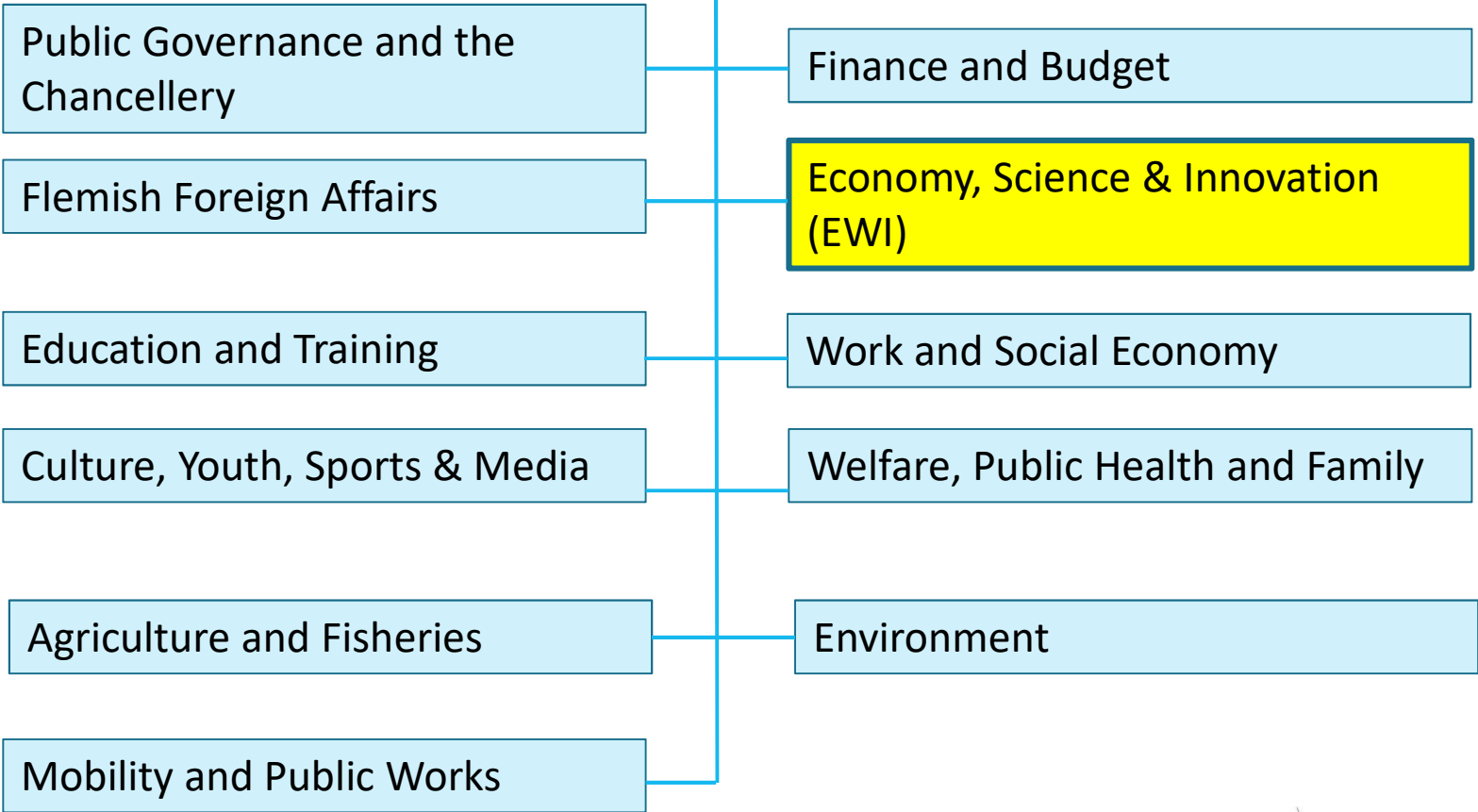
Structure of the Flemish authorities



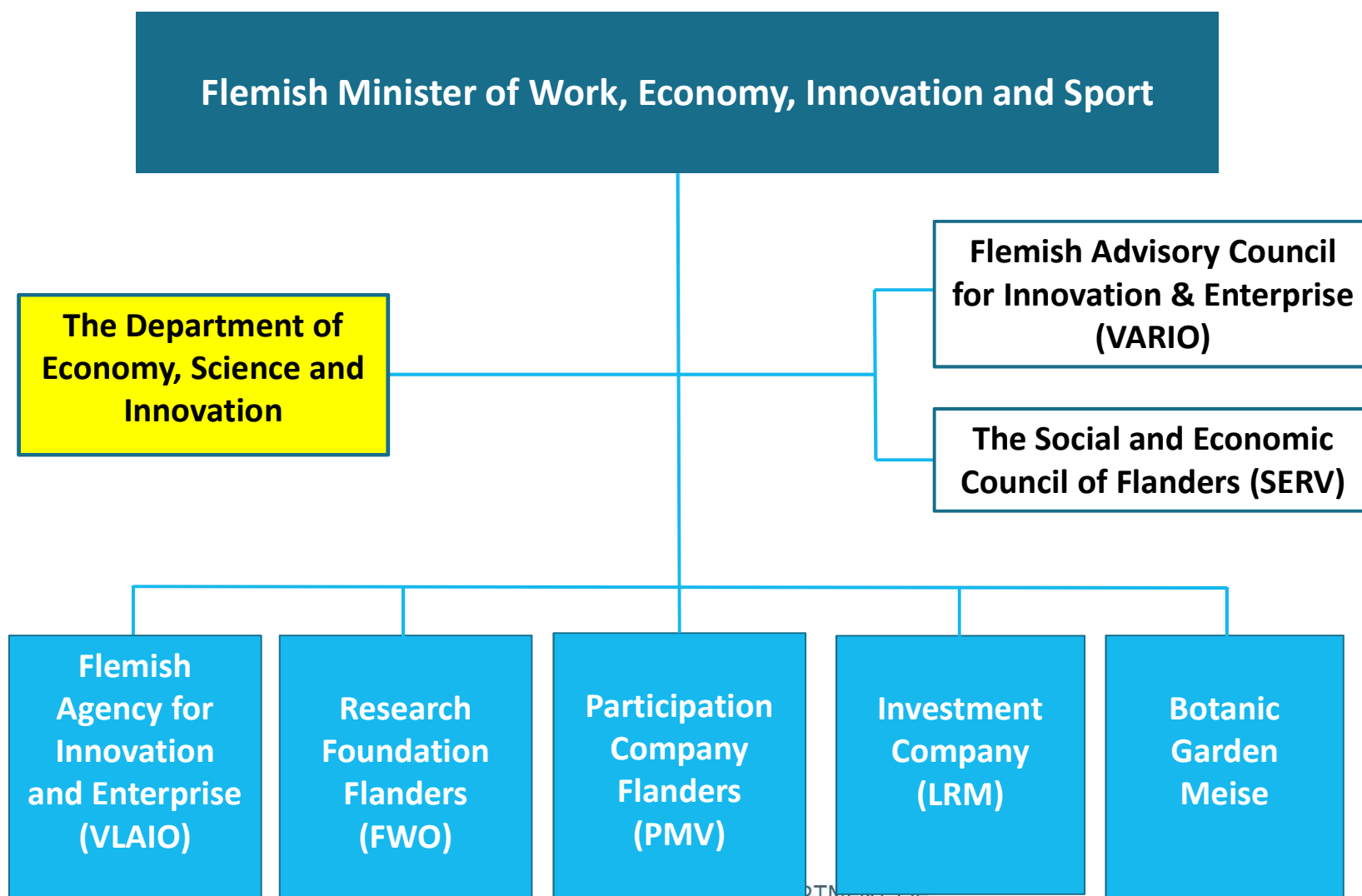
Flanders

State of the Art

11 Policy Domains



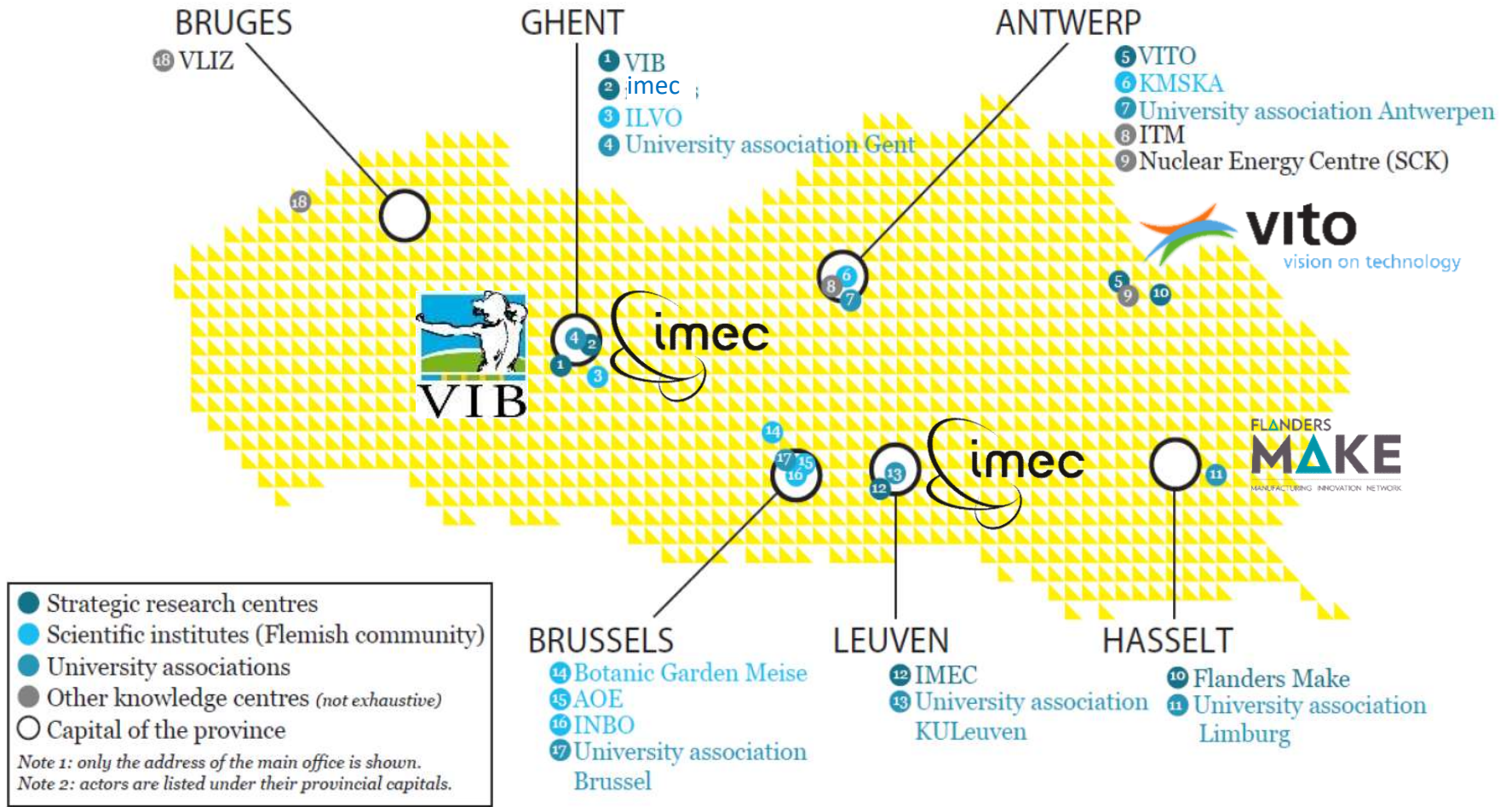
Structure of the Policy Domain on *Economy, Science and Innovation*



Structure of the EWI Department

- ▶ **Enterprise and Innovation Division**
 - seeks to develop an appealing and sustainable entrepreneurial environment and stimulates innovation
- ▶ **Research Division**
 - promotes science policy, by stimulating excellence in fundamental research and by communicating about science, technology and related processes
- ▶ **Strategy and Co-ordination Division**
 - deals with transversal policy themes, long-term strategy and the evaluation and synchronisation of policy
- ▶ **General Affairs & Support Division**
 - deals with human resources, training, finances, ICT, facility and general support for the department

Location of Flanders' major RPOs



Research and Innovation Policy in Flanders

Main R&D&I Policy characteristics

- ▶ **Financing agencies are autonomous**
- ▶ **Funding policy is a combination of:**
 - Block funding for HEIs
 - Performance based research funding for HEIs and SRCs
 - Agreement based funding for SRCs
 - Competitive project/grant based funding (all RPOs)
- ▶ **Thematic priorities**
 - individual subsidies/grants: mainly in a bottom-up way
 - smart specialisation strategy (innovation)
 - × four strategic research centres
 - × nine spearhead cluster policy
- ▶ **Good (to very good) success rate in the EU Programmes**

Current R&D&I policy priorities (2014-2019)

▶ The government coalition agreement

- Focus on demand-driven and market-oriented public policy;
- Simplification and rationalisation of structures and instruments;
- Bigger emphasis on business-oriented innovation and valorisation – incl. growth path towards the 3% R&I intensity,

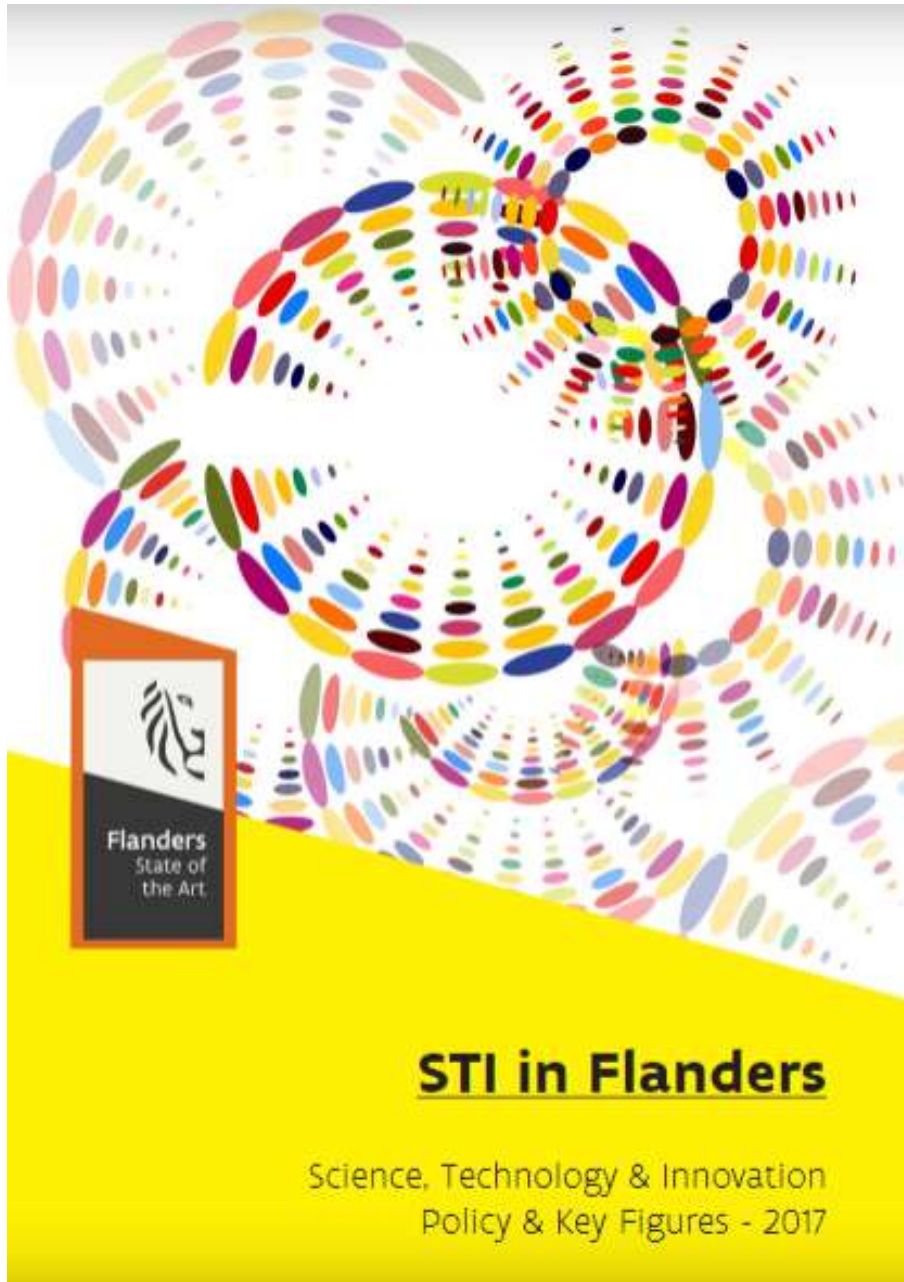
▶ The ministerial policy note

- Allocate more resources for R&D;
- Stimulate collaboration and partnerships between industry and knowledge centres;
- Support SRCs and improve their impact through local valorisation (collaboration with local industry and creation of spin-offs) ;
- Invest in state-of-the-art research infrastructure;
- Stimulate research careers through cross-sectorial and incoming researcher mobility

Selected activities of the EWI Dept.

- ▶ **Preparing, monitoring and evaluating R&D&I policy**
- ▶ **Attending international R&D&I policy committees of various nature (intra Belgian concertation groups, Horizon 2020 programme committees, ERA related groups and subgroups, OECD, UN, ...)**
- ▶ **Organising information flows, concertations activities, outreach evenements, ... mostly within Flanders**
- ▶ **Publishing studies, position papers, statistics and (meta-data) on R&D&I related issues**
- ▶ **Providing “ad hoc” subsidies for all types of R&D&I actors and activities (but as an exception)**

Some EWI highlights (1)



2.85 billion euro Flemish government funding for Science, Technology and Innovation in 2018

Some EWI highlights (2)

The FRIS research portal, run by the Department of Economy, Science and Innovation (EWI) wants to be a simple, transparent and open platform to make Flemish research information publicly available.

The data available for consultation are updated every six months. FRIS gives you information on research projects, coordination data of researchers and research groups. Research projects and organisations are classified in scientific disciplines. Researchers are categorized according to their science domain.

You will find more information on the FRIS-website: www.researchportal.be



FRIS
Flanders Research Information Space

Virtual space collecting all information about **publicly-funded scientific research in Flanders.**

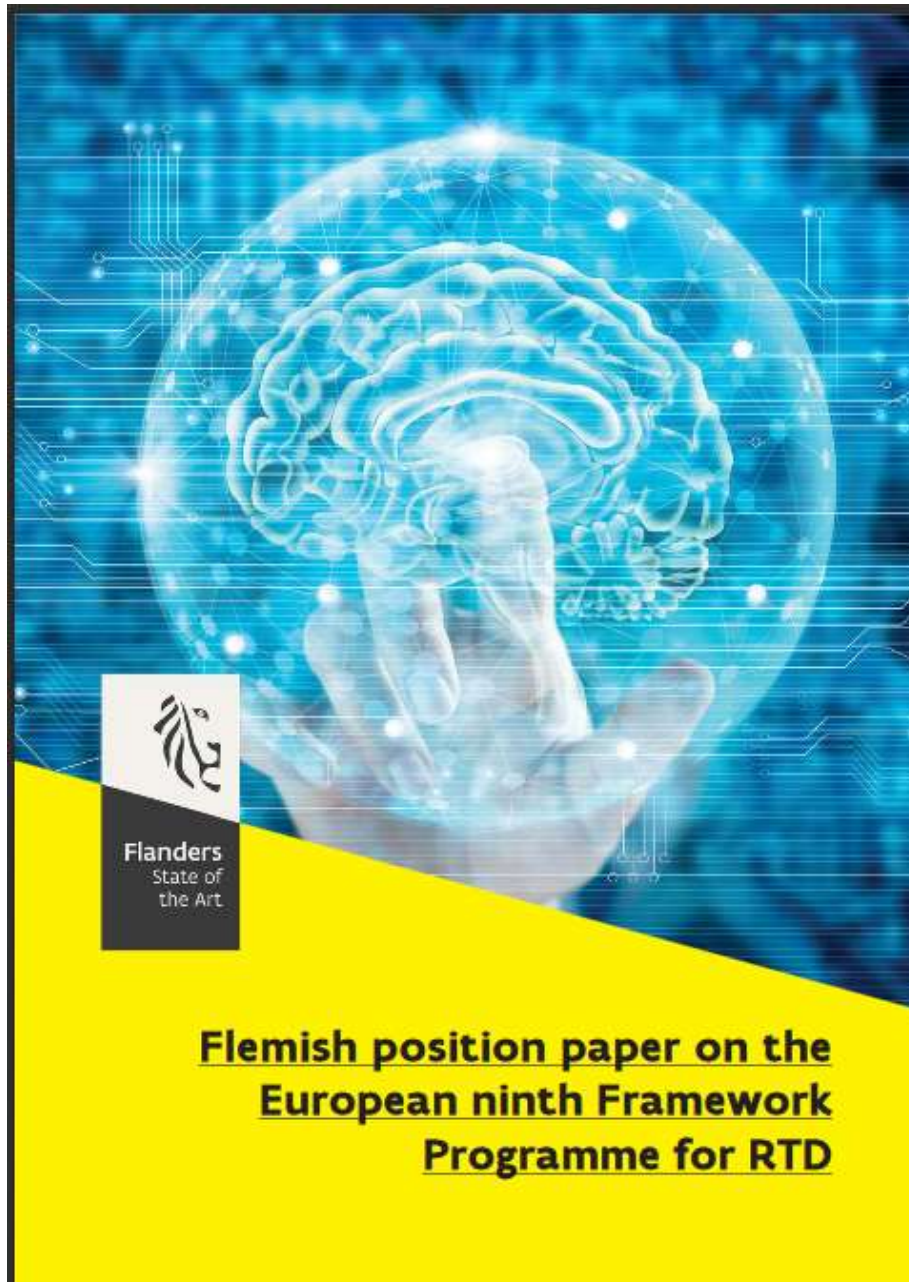


All of this information comes **directly** from the involved parties.



FRIS = open data
All this information can be freely used by anyone!

Some EWI highlights (3)



Joint position paper by all Flemish stakeholders (co-ordinated by the EWI dept.)

DEPARTMENT OF
ECONOMY, SCIENCE & INNOVATION

 **Flanders**
State of the Art

some figures

Current state of H2020 cooperation (1)

Priorities	Projects	Participants BE	Budget BE	Participants BR	Budget BR
Leadership in enabling and industrial technologies (LEIT)	2	3	€ 3 876 412,58	2	€ 59 812,50
Climate action, environment, resource efficiency and raw materials (SC 5)	2	3	€ 736 680,94	2	€ 71 663,75
Food security, sustainable agriculture and forestry, marine and maritime and inland water research (SC2)	3	3	€ 1 046 875,00	3	€ 60 000,00
Health, demographic change and wellbeing (SC1)	2	4	€ 946 000,00	11	€ 3 592 375,50

Situation end February 2017

Current state of H2020 cooperation (2)

- **FUNDACAO OSWALDO CRUZ**
- ***FUNDACAO UNIVERSIDADE DE PERNAMBUCO***
- **FUNDACAO FACULDADE DE MEDICINA**
- **INSTITUTO BUTANTAN**
- **UNIVERSIDADE FEDERAL DE MINAS GERAIS**
- **ASSOCIACAO TECNICO CIENTIFICA ESTUDO COLABORATIVO LATINO AMERICANO DE MALFORMACAO CONGENITAS**
- **FUNDACAO DE APOIO A UNIVERSIDADE DE SAO PAULO**
- **FUNDACAO COORDENACAO DE PROJETOS PESQUISAS E ESTUDOS TECNOLOGICOS COPPETEC**
- **FUNDACAO BAHIANA DE INFECTOLOGIA**
- **AGENCIA PAULISTA DE TECNOLOGIA DOS AGRONEGOCIOS**
- **FUNDACAO DE AMPARO A PESQUISA DO ESTADO DE SAO PAULO**
- **UNIVERSIDADE FEDERAL DE GOIAS**
- **FINANCIADORA DE ESTUDOS E PROJETOS**
- **LABORATORIO NACIONAL DE COMPUTACAO CIENTIFICA**
- **MINISTERIO DA CIENCIA E TECNOLOGIA**
- **UNIVERSIDADE DE SAO PAULO**
- **UNIVERSIDADE FEDERAL DO RIO DE JANEIRO**
- **KATHOLIEKE UNIVERSITEIT LEUVEN**
- ***INTERDISCIPLINAIR INSTITUUT VOOR BREEDBAND TECHNOLOGIE***
- ***UNIVERSITEIT ANTWERPEN***
- **AGENTSCHAP VOOR INNOVATIE DOOR WETENSCHAP EN TECHNOLOGIE**
- **FONDS FLANKEREND ECONOMISCH EN INNOVATIEBELEID**
- **MINISTERIE VAN DE VLAAMSE GEMEENSCHAP - LIN**
- **NCENTRIC EUROPE BVBA**
- **INSTITUUT VOOR TROPISCHE GENEESKUNDE PRINS LEOPOLD**
- **VRIJE UNIVERSITEIT BRUSSEL**
- **FONDS VOOR WETENSCHAPPELIJK ONDERZOEK-VLAANDEREN**
- **JANSSEN PHARMACEUTICA N.V.**
- **VLAAMS INSTITUUT VOOR DE ZEE**



DEPARTMENT OF
ECONOMY, SCIENCE & INNOVATION

